



ESTD

2015

# KGİ MAKİNE

SANAYİ VE TİCARET LTD.ŞTİ.

**KGİ MAKİNE  
GENERAL CATALOGUE**

[www.kgtmakine.com](http://www.kgtmakine.com)





ESTD

2015

# KGİ MAKİNE

S A N A Y İ V E T İ C A R E T L T D . Ş T İ .



# KGT MAKINE

# CATALOGUE

# CONTENTS

05 - 07

## ENTRY UNITS

---

- 05** T-RAU Accumulator Unit
- 06** T-ASF Sizing and Squeezing Foulard
- 07** T-ESF Front Squeezing Foulard

08 - 17

## ALIGNMENT UNITS

---

- 08** T-COS Chain Alignment Unit
- 09** T-HAD Direct Drive Helical Opener Unit
- 10** T-KOS Fabric Alignment Sensor
- 11** T-BOS Cradle Alignment Unit
- 12** T-BTO Printing Type Chain Alignment System
- 13** T-TBO Printing Type Chain Alignment Unit
- 14** T-YHA Washing Machine Type Helical Opener Unit
- 15** T-YCO Washing Machine Type Chain Alignment Unit
- 16** T-YBO Washing Machine Type Cradle Alignment Unit
- 17** T-TCA Driveless Chain Opener Unit

18 - 29

## CHAIN ENTRY UNITS

---

- 18** T-MKA Mechanical Edge Opener Unit
- 19** T-DMA Narrow Type Mechanical Edge Opener Unit
- 20** T-MKA Pneumatic Edge Opener Unit Single Blow (Elephant Ear)
- 21** T-KSE Edge Control Sensor
- 22** T-KKS Edge Control System
- 23** T-FBU Brush Feed Unit
- 24** T-MTU Roller Trigger Unit
- 25** T-CTU Combination Trigger Unit
- 26** T-STU Trigger Unit (Belt Type)
- 27** T-MKD Edge Correction Unit
- 28** T-TMK Mechanical Edge Opener Unit Type Trimming Machine
- 29** T-TTK Overall Sewing Mechanical Edge Opener Unit

30-31

## EDGE COLLAR UNITS

---

- 30** T-SKK Edge Gluing Unit
- 31** T-SKK Top Edge Gluing Unit



32 - 37

## EDGE CUTTING UNITS

- 32** T-BKU Edge Cutting Unit
- 33** T-KKH Edge Cutting System (External System)
- 34** T-TBK Transfer Printing Edge Cutting Unit
- 35** T-KKU Thick Fabric Edge Cutting Unit
- 36** T-OKU Middle Cutting Unit
- 37** T-KMK Lamination Machine Edge Cutting Unit

38 - 40

## EXIT UNITS

- 38** T-CPU Paste Units
- 39** T-CDS Fabric Winding Unit
- 40** T-MTS Central Drive Fabric Winding Unit

41 - 43

## CARPET EDGE UNITS

- 41** T-HBO Carpet Cradle Aligning Unit
- 42** T-HCO Carpet Slide Aligning Unit
- 43** K-BKM Liquid Mixing Mixer Unit

44 - 47

## MIXER

- 44** K-BKM Liquid Mixing Mixer Unit
- 45** K-MKM Mini Mixing Mixer
- 46** K-LKM Laboratory Mixing Mixer
- 47** K-SDU Liquid Dosing Unit

48

## MACHINES

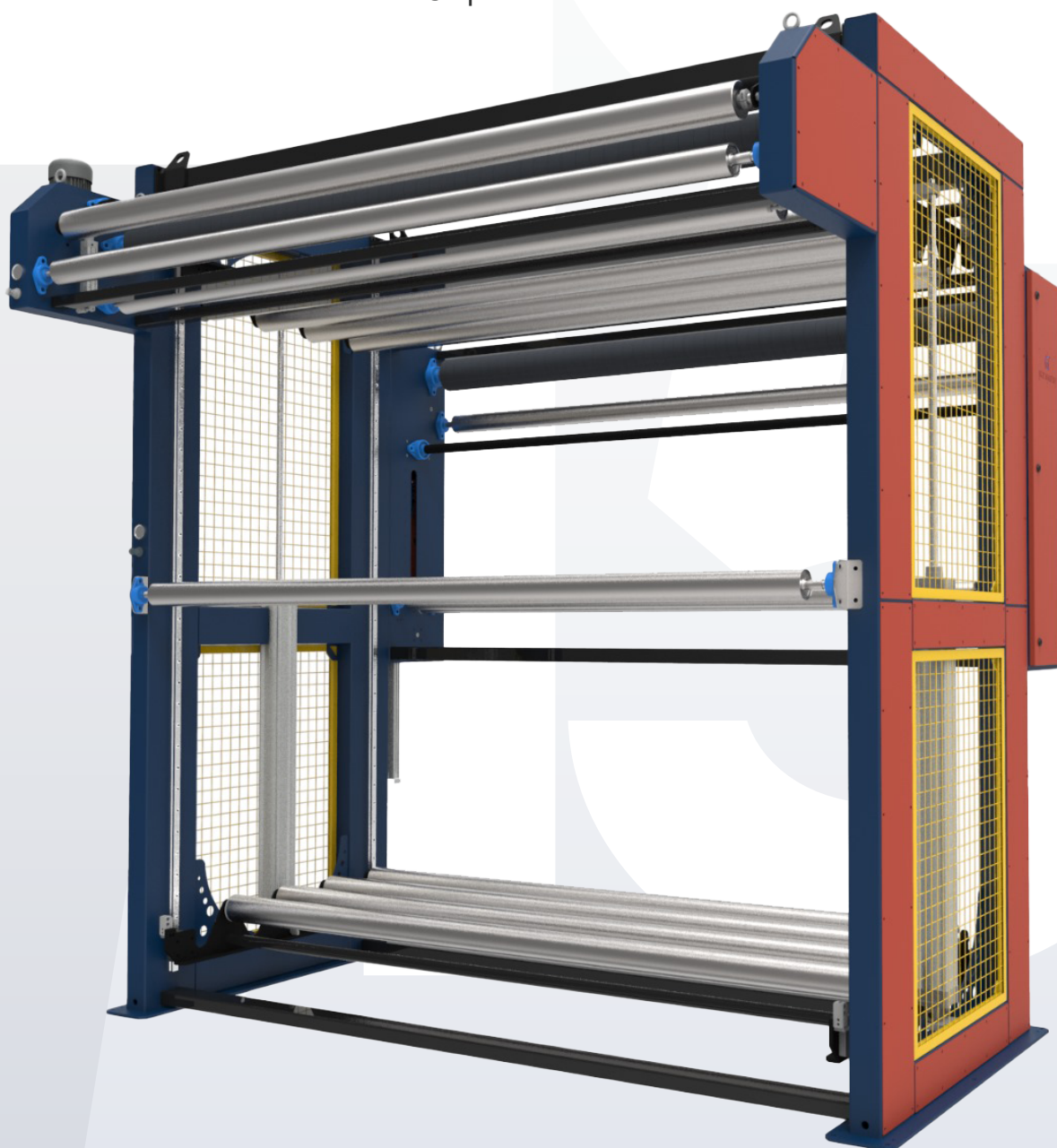
- 48** T-AEU Open Width Equalizing Unit

# T-RAU

## Accumulator Unit

“

This unit is used to keep the machine running continuously during fabric changes at the entry of the ram and sanforizing machines. Depending on the fabric type, either the T-COS Chain Alignment Unit or the T-BOS Cradle Alignment Unit is present at the entry. Fabric tension is controlled by a pneumatic dancer system. The fabric entry is facilitated by a rubber-coated roller to better grip the fabric.

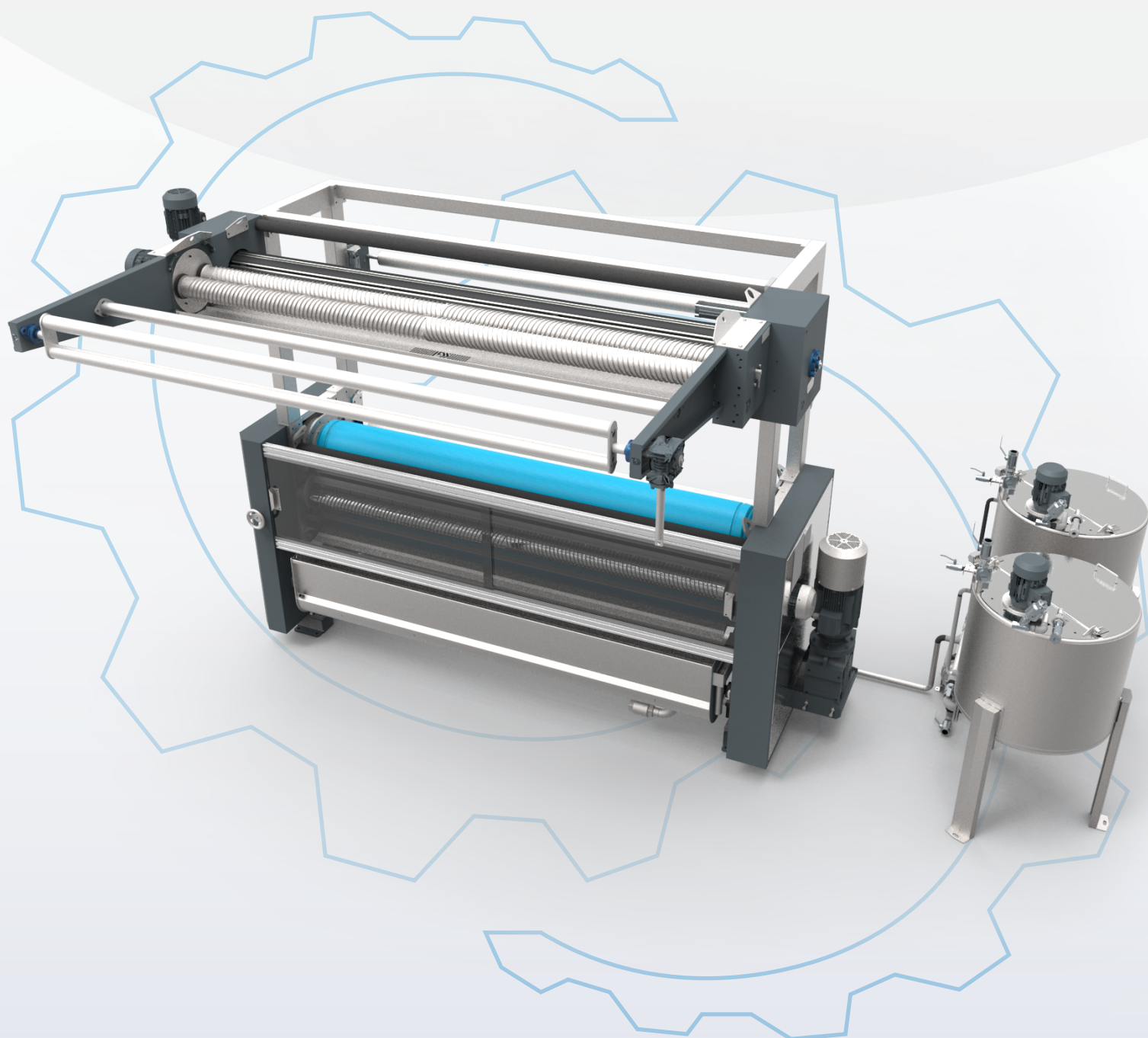


# T-ASF

## Sizing and Squeezing Foulard



The sizing and squeezing foulard are designed with pneumatic bellows to apply pressure evenly across the fabric surface. It comes with a stainless sizing tank as standard, with optional heating apparatus and control.



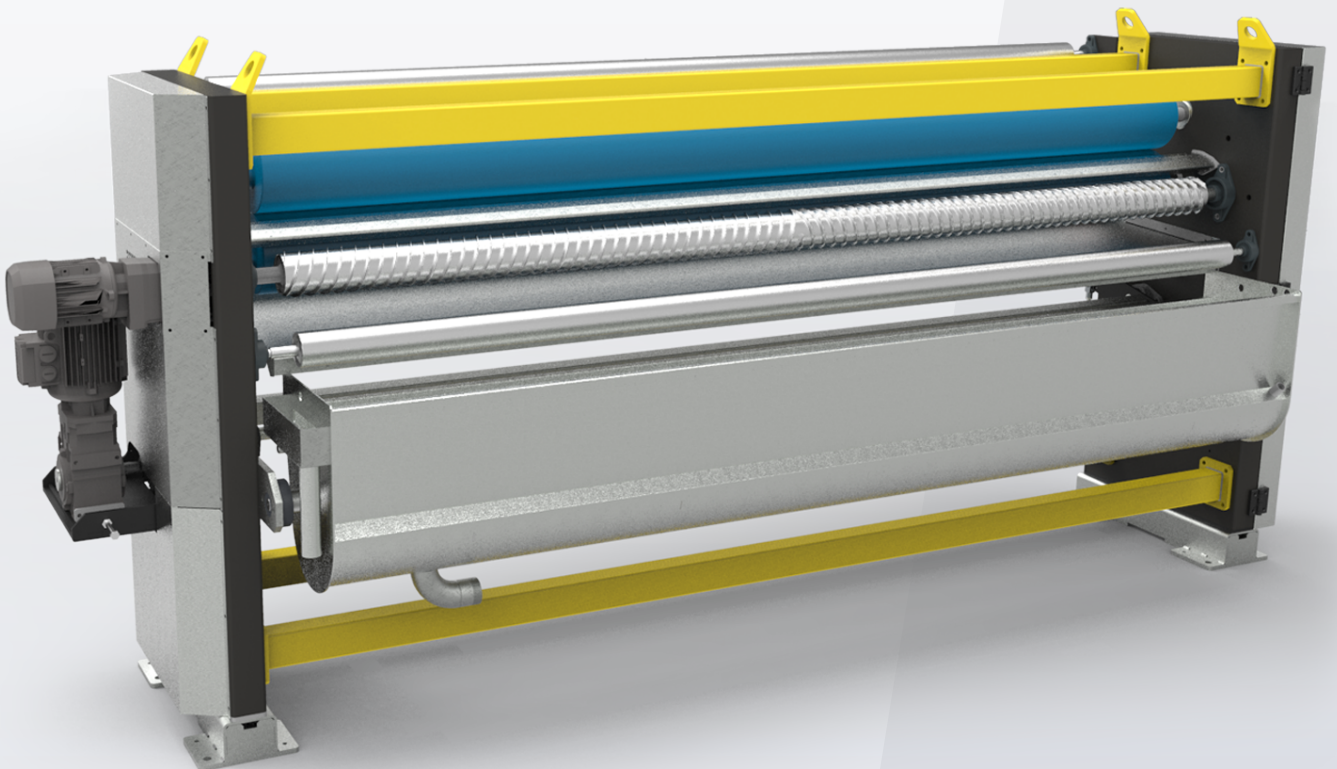
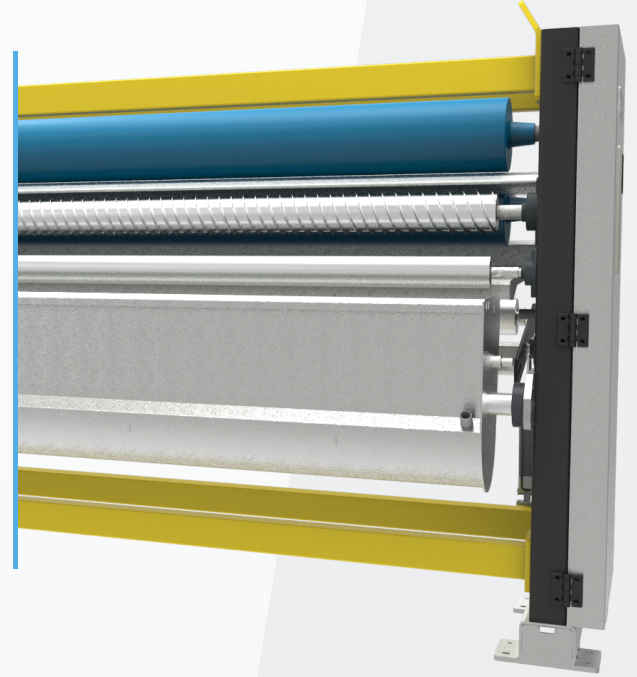


# T-ESF

## Front Squeezing Foulard

“

Commonly used across various lines in the textile industry, it is used to remove excess water from the fabric. The squeezing process is performed with pneumatic bellows. The opening cylinder at the fabric entry prevents folds, ensuring full surface squeezing. Water drained from the fabric is collected in a tank and discharged via a drain valve.





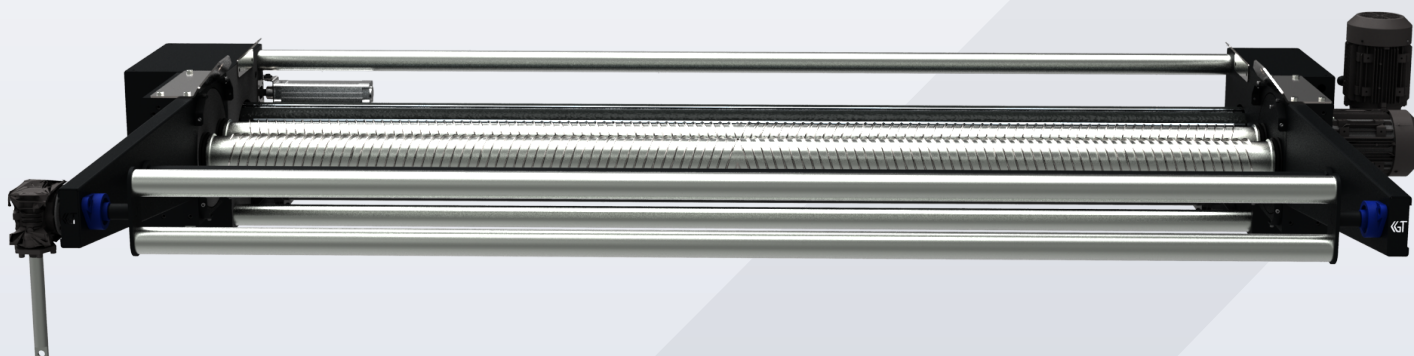
# T-COS Chain Alignment Unit

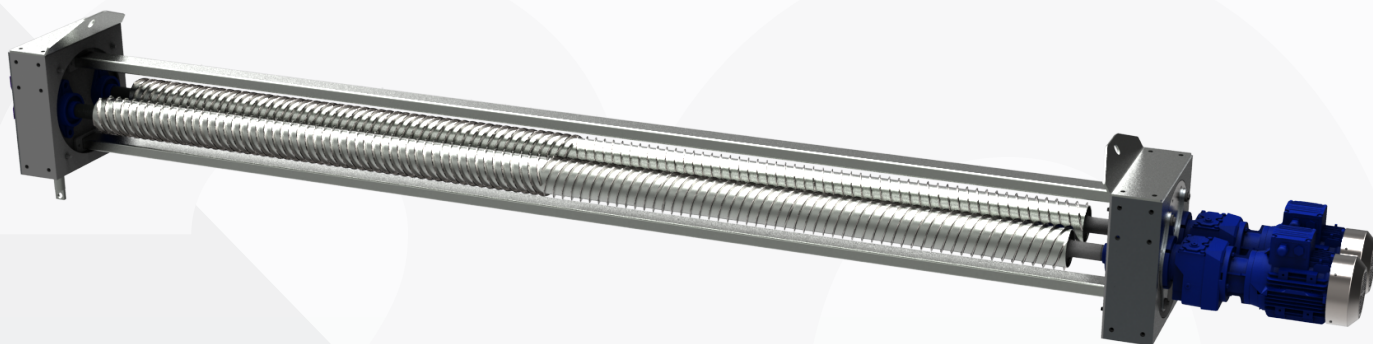


Installed at the entry of ram, open-width sanforizing, and similar machines to align the fabric entering the machine. Horizontal moving chains guide the fabric to the right and left. A tube sensor at the fabric exit detects the fabric's position, controlling the chain movement.

## T-COS Chain Alignment Unit

Variable bar bands can be used to center fabrics such as terry cloth, nonwoven, etc. Bar centering units can also be preferred for tension-free and relaxation operations in washing lines.





# T-HAD Direct Drive Helical Opener Unit



The helical opener unit is used to open the surfaces and edge folds of fabrics. The cylinders are made of stainless steel. Each opening cylinder is driven by a motor and reducer. The angles of the cylinders can be manually adjusted. The system does not operate with a chain and sprocket or belt.

## T-HAD Direct Drive Helical Opener Unit

For standard woven fabric, the height of the opening profile wound onto the cylinder is 7mm and the width is 3mm. The spiral opener unit is produced with center-adjustable settings.

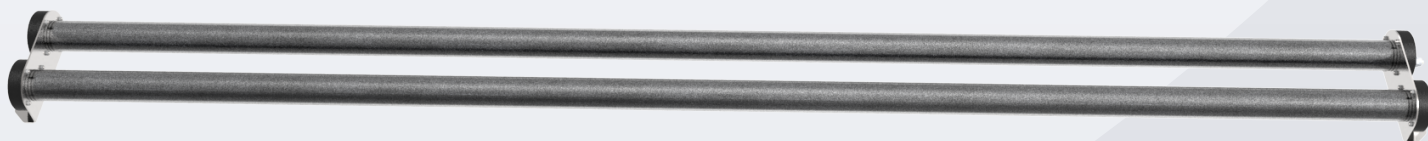
# T-KOS Fabric Alignment Sensor



## T-KOS Fabric Alignment Sensor

It has high sensitivity to external light and transparent fabrics. Produced as a Glass Tube for washing machine aligners.

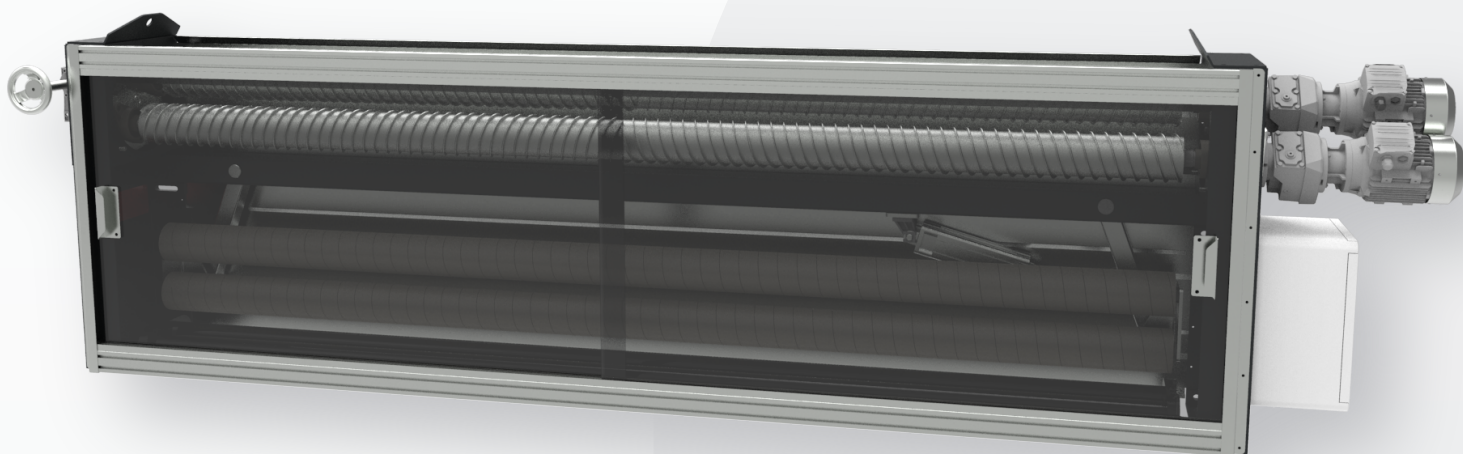
The sensor consists of two parts: an infrared light source and a receiver sensor. The fabric passes between the light source and the receiver sensor. It determines the fabric's position by measuring and provides directional movement information to the alignment bars. It ensures the fabric's centering.





# T-BOS

## Cradle Alignment Unit

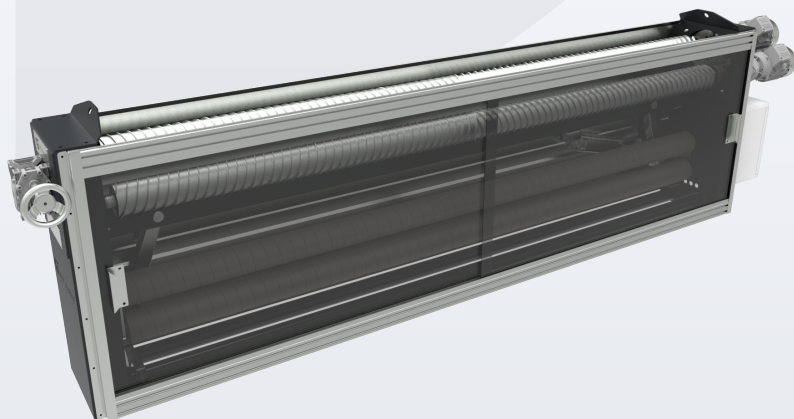


“

This unit is typically used to direct woven fabrics, either centered or with a single edge reference, to the next unit. The unit features two idle cylinders for cradle movement between right and left bodies using pneumatic pistons. The cylinders are either coated or wrapped with bands.

### T-BOS Cradle Alignment Unit

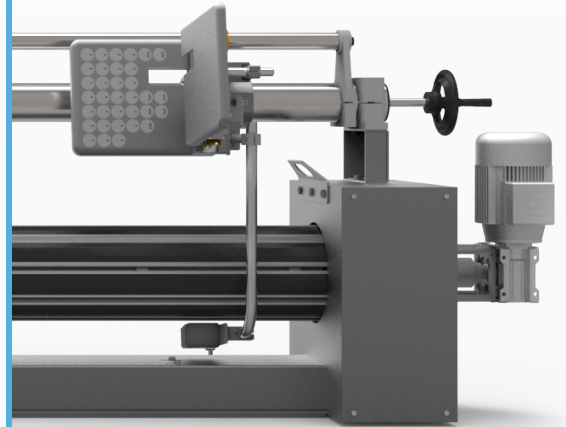
Fabric can be aligned to the machine with T-KOS sensor assistance or with a single-edge reference from the edge control sensor.



# T-BTO Printing Type Chain Alignment System

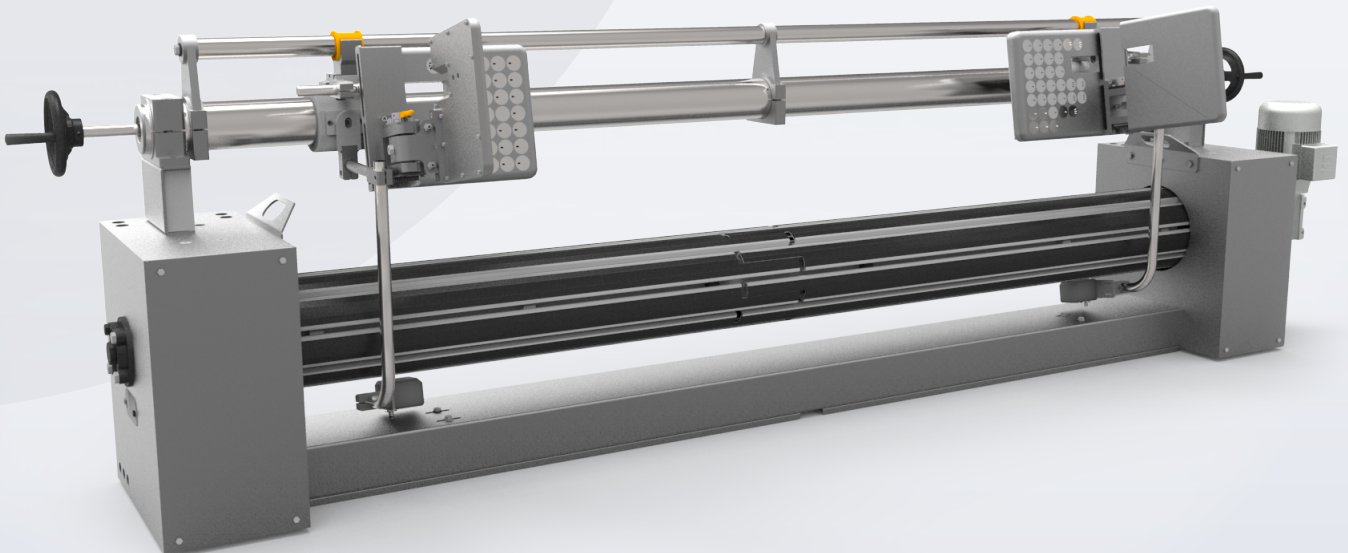
“

This unit is used at the entries of rotation or film-printing machines to deliver the fabric to the printing machine without tension. It is motor-driven to ensure tensionless fabric delivery to the printing machine, either referencing from one or both edges.



## T-BTO Printing Type Chain Alignment System

Pneumatic edge opener and sensor apparatus can be added with the top adjustment system on the machine.

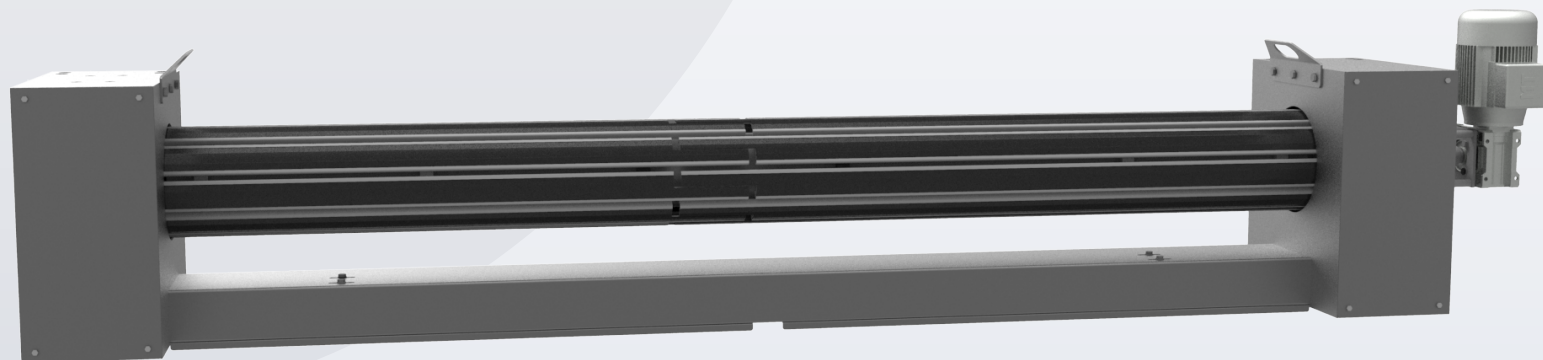
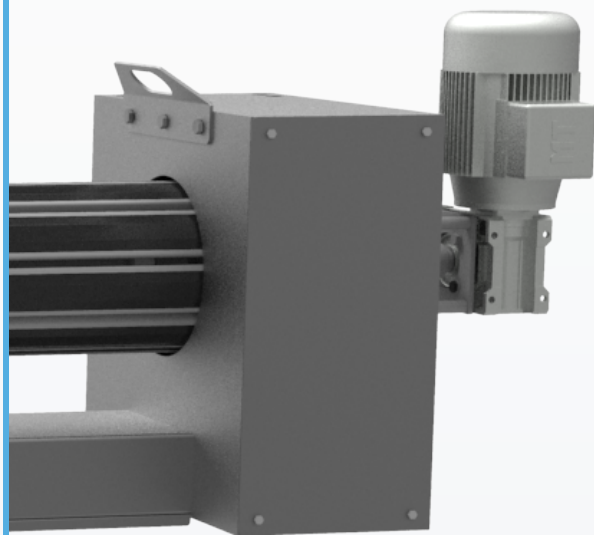


# T-BTU

## Printing Type Chain Alignment Unit

“

This machine is used at the entry of a transfer printing machine. It is motor-driven to ensure tensionless fabric delivery to the printing machine, either referencing from one or both edges.

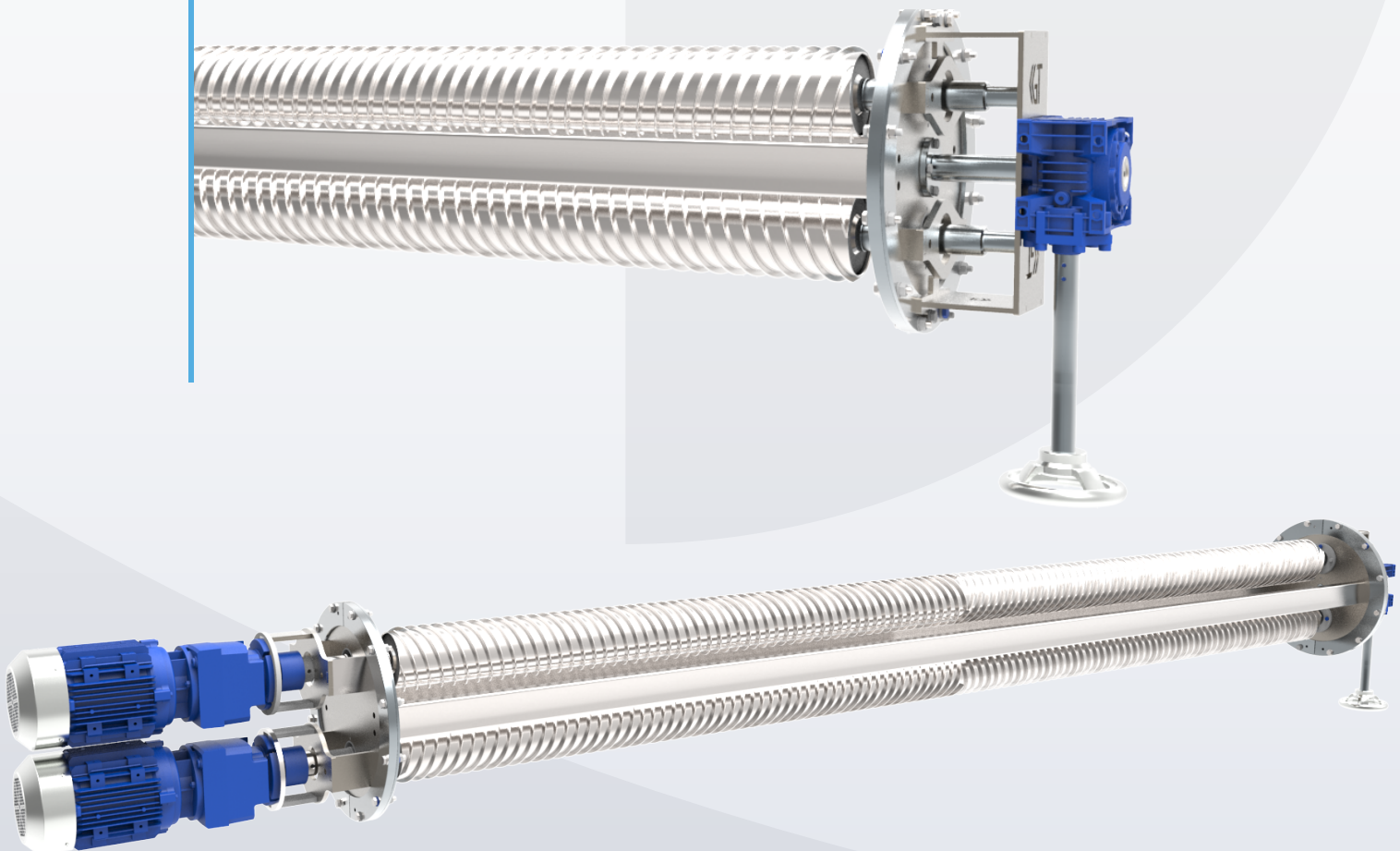


# T-YHA

## Washing Machine Type Helical Opener Unit



- ◆ Used in fabric washing and dyeing processes.
- ◆ Made of stainless material.
- ◆ Used in fabric lines of washing and dyeing machines.
- ◆ Suitable for working with wet fabric inside the machine.
- ◆ Provides transverse opening of folded fabric during processing.
- ◆ The angle of the rollers is adjustable to adjust pressure on the fabric.

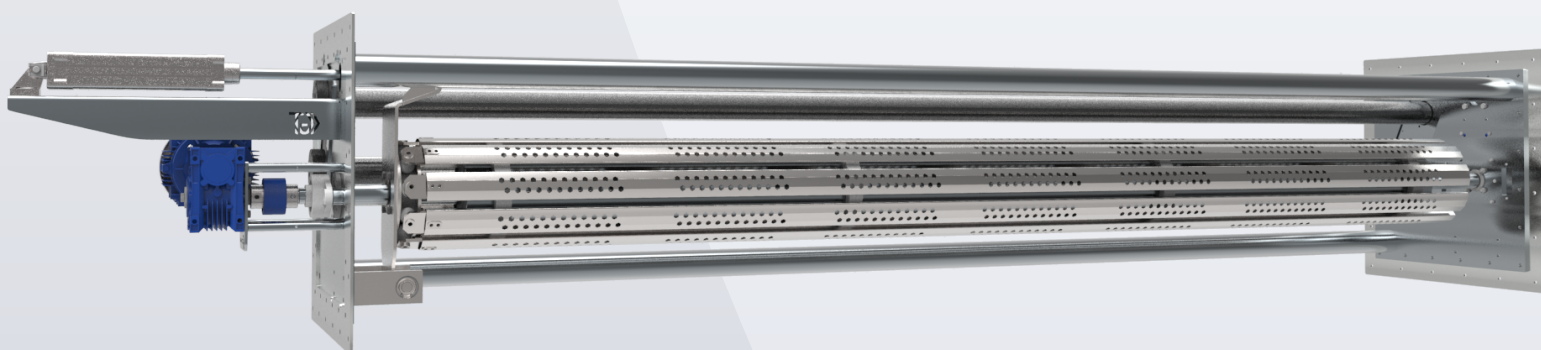
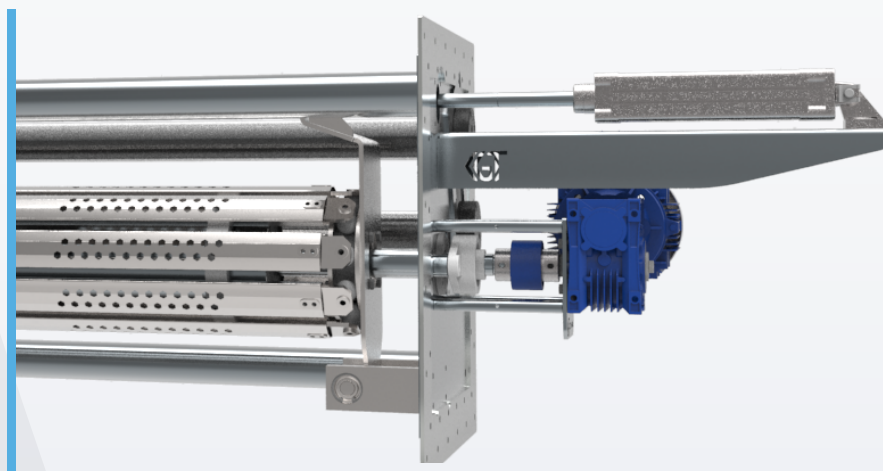


# T-YCO

## Washing Machine Type Chain Alignment Unit



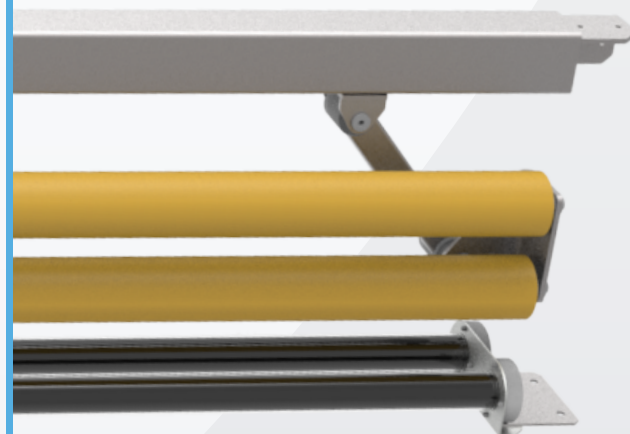
- ◆ Used in fabric washing and dyeing processes.
- ◆ Made of stainless material.
- ◆ Used in fabric lines of washing and dyeing machines.
- ◆ Suitable for working with wet fabric inside the machine.
- ◆ Provides the required fabric alignment at process transitions.
- ◆ Aligns the fabric by moving to the right or left with the washing type alignment sensor.



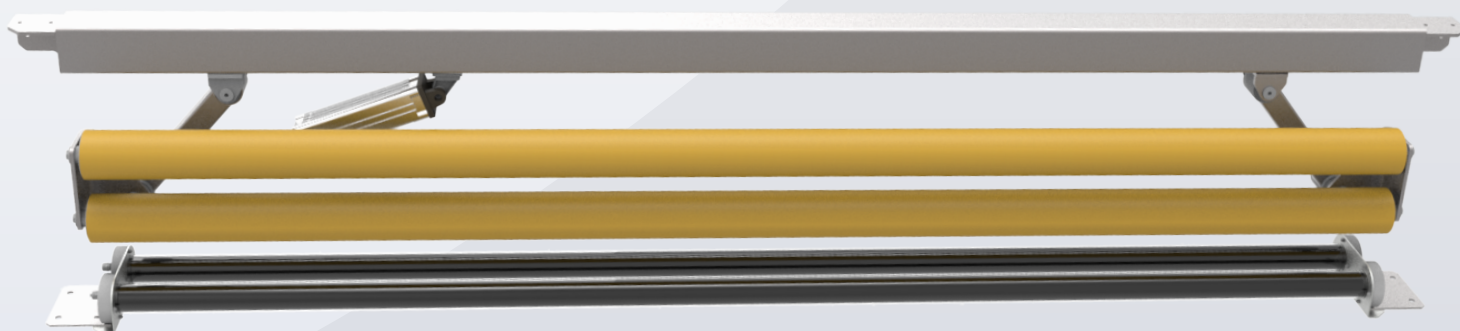


# T-YBO Washing Machine Type Cradle Alignment Unit

- ◆ Fabric passes through two parallel cylinders.
- ◆ The cylinders, with the help of a pneumatic piston, move in the right or left direction from the center, giving direction to the fabric.
- ◆ Ensures fabric goes straight through.



2015 ● — ● ∞



# T-TCA Driveless Chain Opener Unit

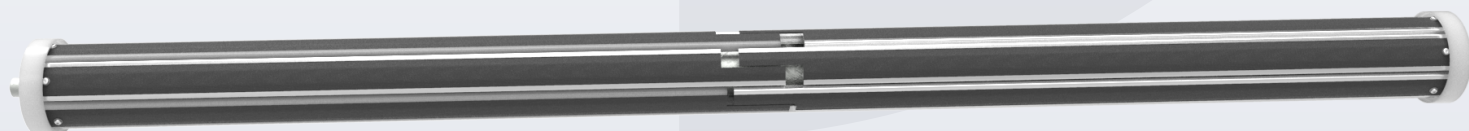


Used for opening knit or woven fabrics transversely at the entry and exit of machines such as ram, quality control, packaging, and open washing machines. Used before bobbin winding and cone winding in finishing processes.



## T-TCA Frictionless Bar Opener Unit

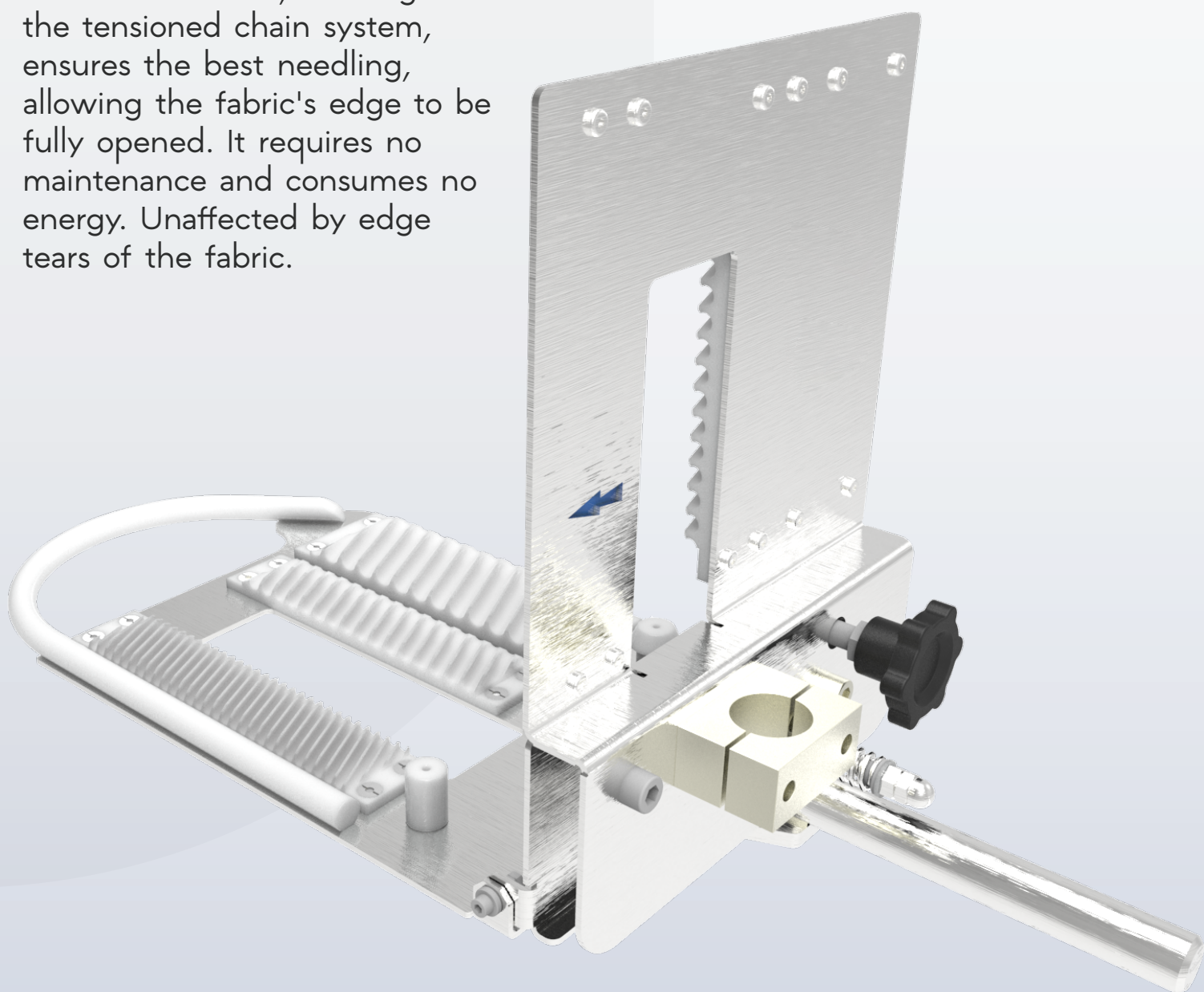
It is made of right and left fixed movable bars. Depending on where it will be used, it is produced with stainless steel or aluminum bars coated with mohair. There is no energy consumption because it is not touched by the fabric.



# T-MKA Mechanical Edge Opener Unit

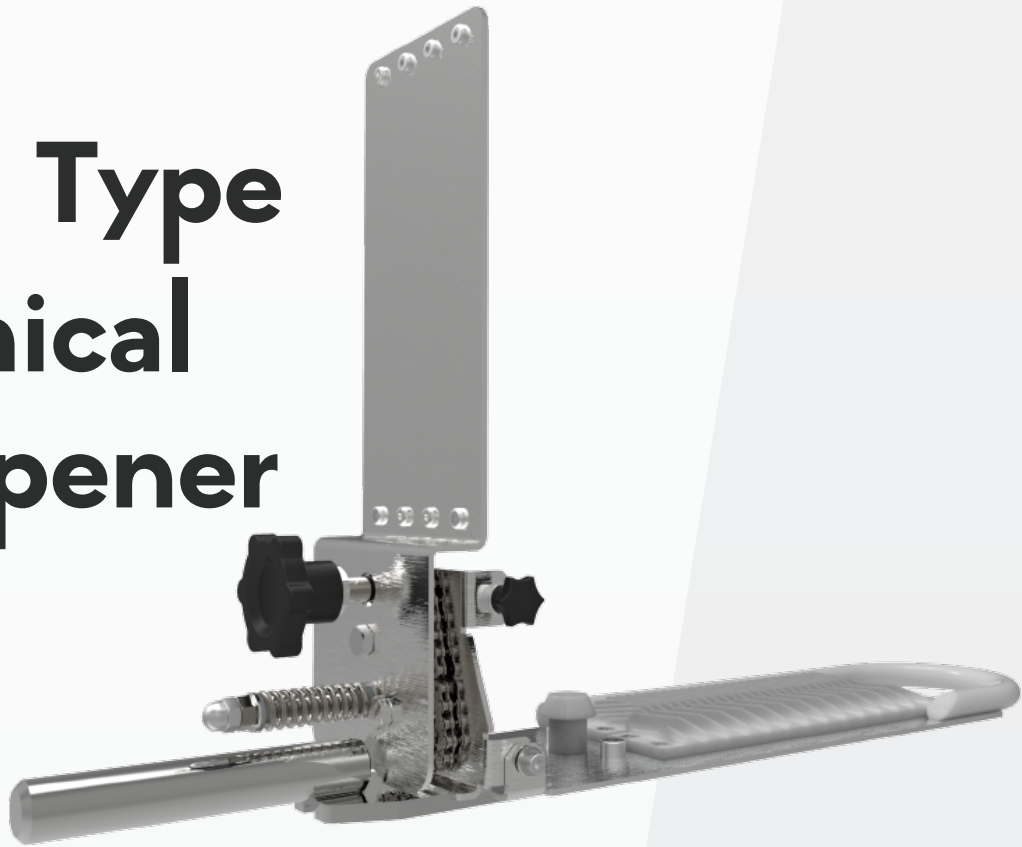


This unit opens the curved and folded edges of knitted fabrics. The ram machine, working with the tensioned chain system, ensures the best needling, allowing the fabric's edge to be fully opened. It requires no maintenance and consumes no energy. Unaffected by edge tears of the fabric.

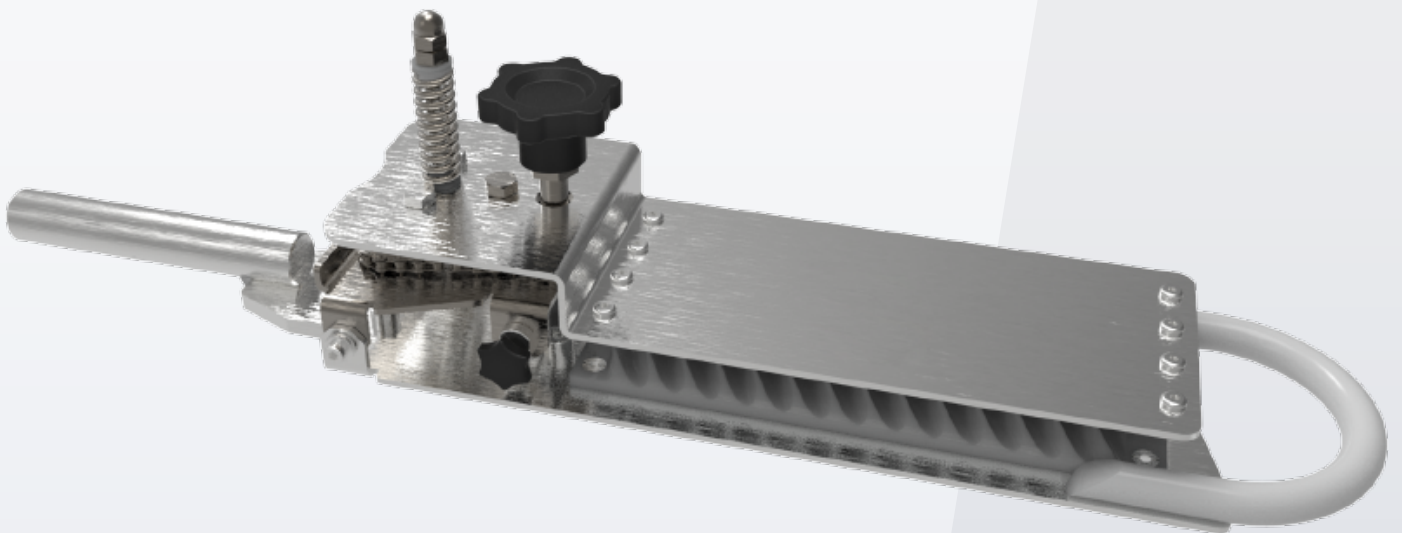




# T-DMA Narrow Type Mechanical Edge Opener Unit



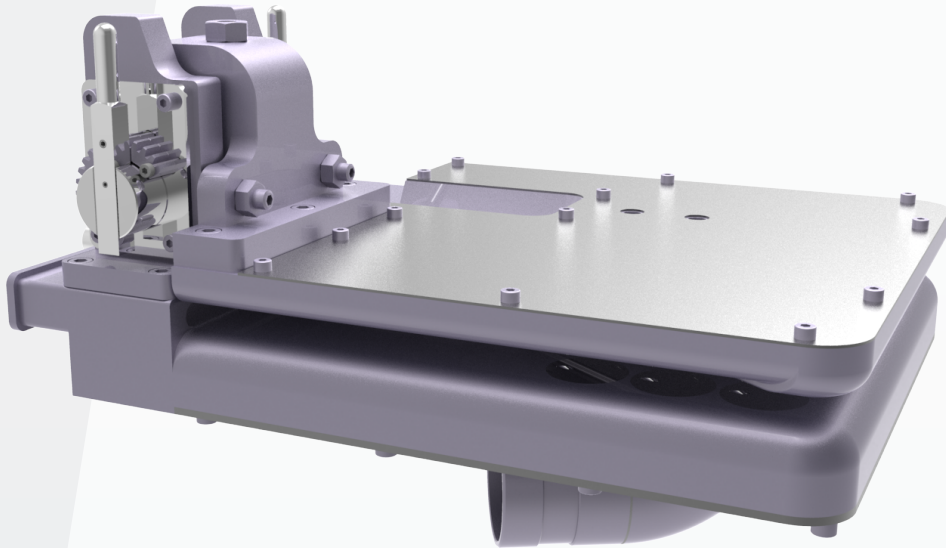
This unit is used to open the edges of fabrics with minimal folds in the entry of chain systems with needle and clamp types.



## T-DMA Narrow Type Mechanical Edge Opener Unit

It can be used to open the final edge folds of fabrics before sewing in edge sewing machines, before trimming machines, and before printing blanket in printing machines.

# T-MKA Pneumatic Edge Opener Unit Single Blow (Elephant Ear)

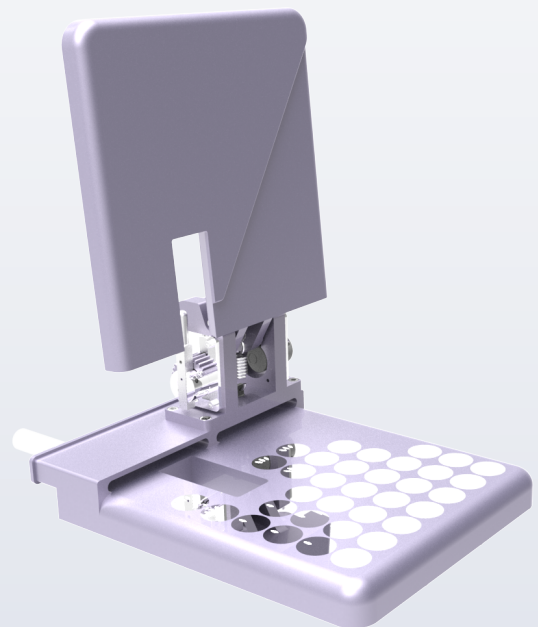


“

This unit is used for opening the edge folds of sensitive knitted and woven fabrics without friction, where a pneumatic edge fold opening unit is used at the entry of RAM machines and sanforizing machines with an equalizing unit. It is used before the printing type alignment unit in rotary and flat printing machines. A blower unit is required for suitable air pressure due to the application.

## T-MKA Pneumatic Edge Opener Unit Single Blow (Elephant Ear)

Used to open edge folds of moist or dry sensitive fabrics without friction to the maximum extent possible. Suitable for all types of fabrics with adjustable height.



# T-KSE Edge Control Sensor



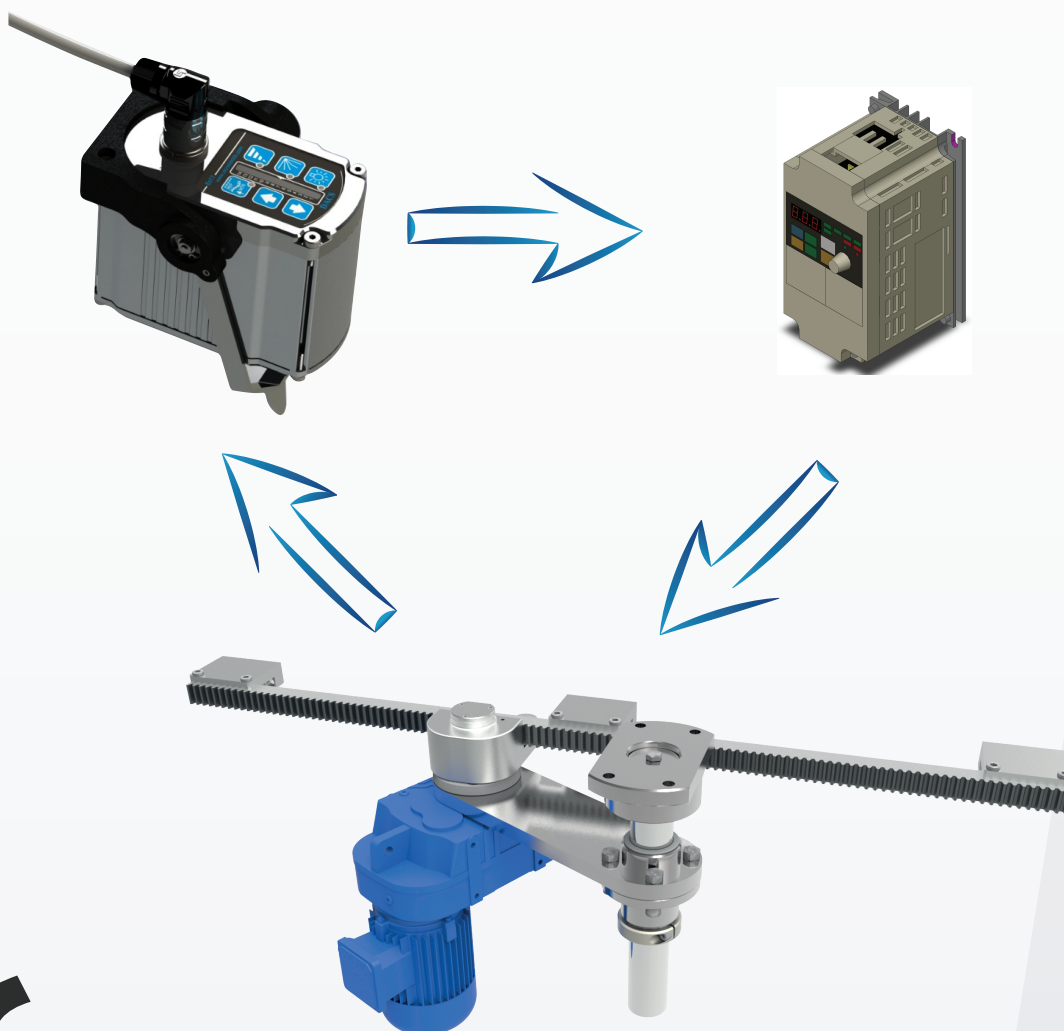
## T-KSE Edge Control Sensor

With the inward rotation of the scanning arm in very irregular product edges, mechanical scanning provides control stabilization.

“

This product enables the detection of the fabric edge optically or mechanically. The infrared edge sensor working with the reflection principle ensures reliable scanning of the product edge even in colors rich in contrast and with low reflectivity.

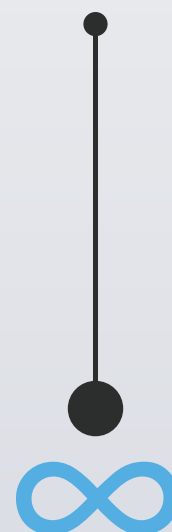
# T-KKS Edge Control System



“

This unit is used at the entrance of RAM machines, drying machines with equalizing units, and sanfor machines. Motor groups moving the rails right and left for the fabric edge to be pinned properly operate based on the information received from the edge control sensor. The system moves the rails with an AC motor and rack and pinion system.

2015



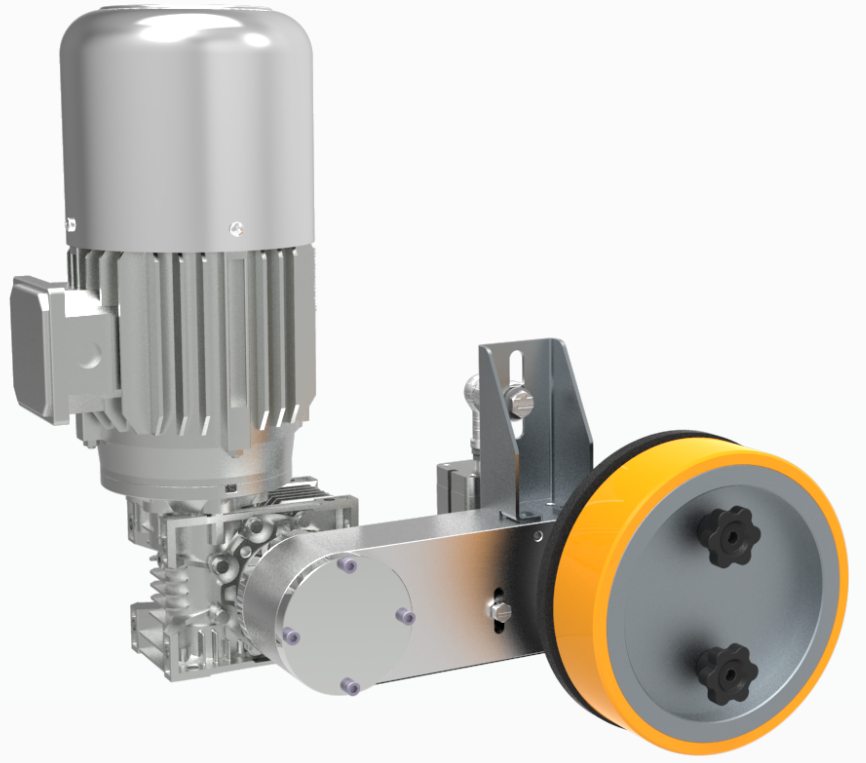
# T-FBU Brush Feed Unit



It is a system that can synchronize with the chain speed. It can provide feed separately to the right and left units when necessary. It is equipped with an AC inverter control system. It is capable of providing 50% feed. The feed wheel can be easily replaced, and its upper coating is made of HYPOLEN material. It is compatible with all trigger systems. It has a pneumatic controlled lifting and lowering system.

## T-FBU Brush Feed Unit

Bu ünite, RAM makineleri ve egalize ünitelerinin zincir girişlerinde, kumaşın zincir iğnelerine besleme verilerek iğnelenmesi için tasarlanmıştır.



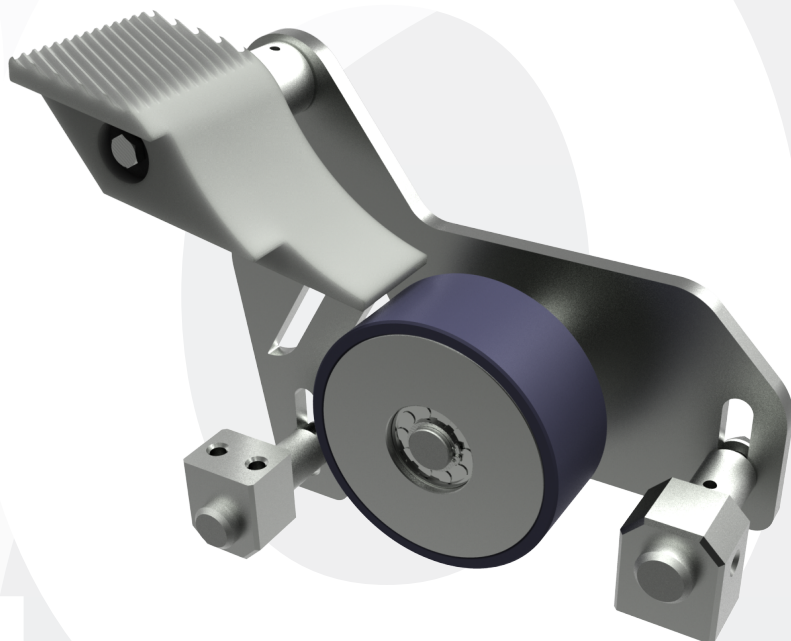


# T-MTU

## Roller Trigger Unit

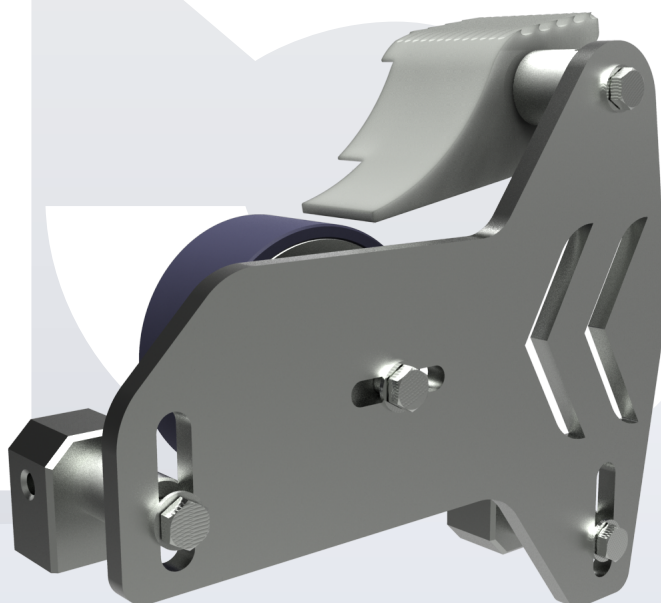


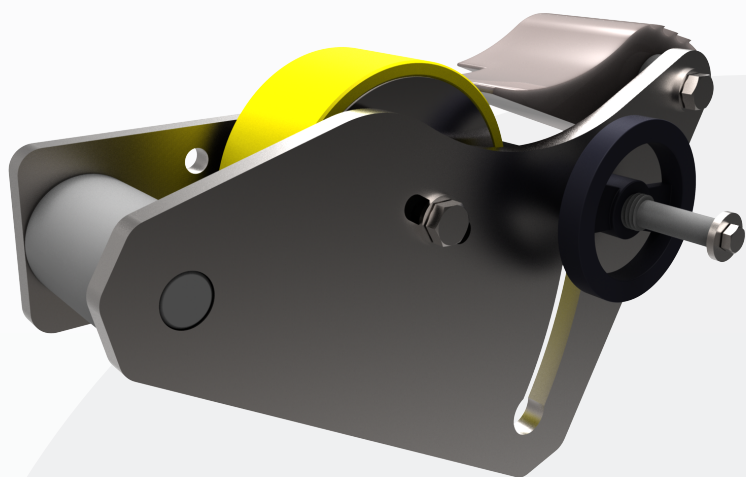
This unit is designed to eliminate problems arising from slipping in classic type triggers. It is mounted under the brush feed unit at the chain input of RAM machines, open width sanfor, drying machines, and machines with equalizing units. It ensures that the fabric edge coming out of the edge opener is pinned without folding.



### T-MTU Roller Trigger Unit

It ensures that the fabric edge coming out of the edge opener is fed to the needle without folding until it reaches the needle. It eliminates the adjustment problem during yarn change as there is no yarn on the product. Roller trigger unit can be used to eliminate the yarn marks on the fabric in yarn trigger systems. It is compatible with all RAM machines thanks to its ergonomic structure.



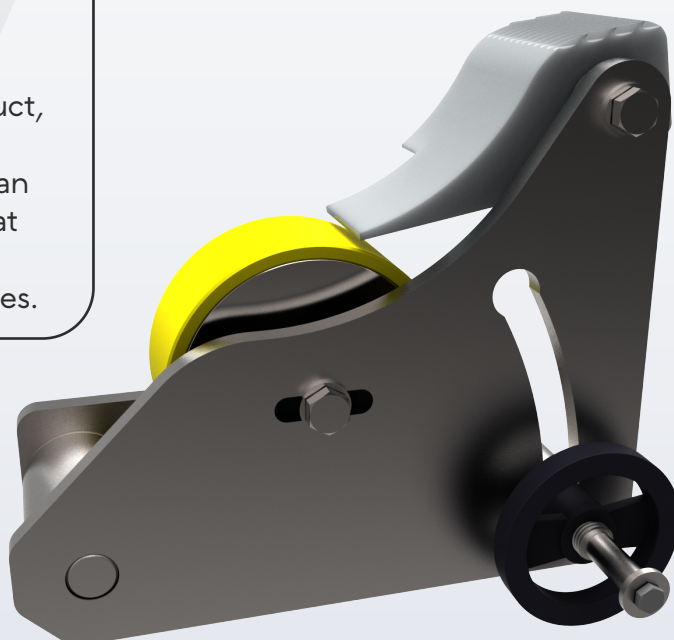


## T-CTU Combination Trigger Unit

The combination trigger is used in conjunction with the chain type where the needle clamp is used. It allows the trigger system to move away from the needle without removing it when the machine is in clamp mode. It is designed to eliminate problems arising from slipping in classic type triggers. It is mounted at the chain input of RAM machines under the brush feed unit. It ensures that the fabric edge coming out of the edge opener is pinned without folding.

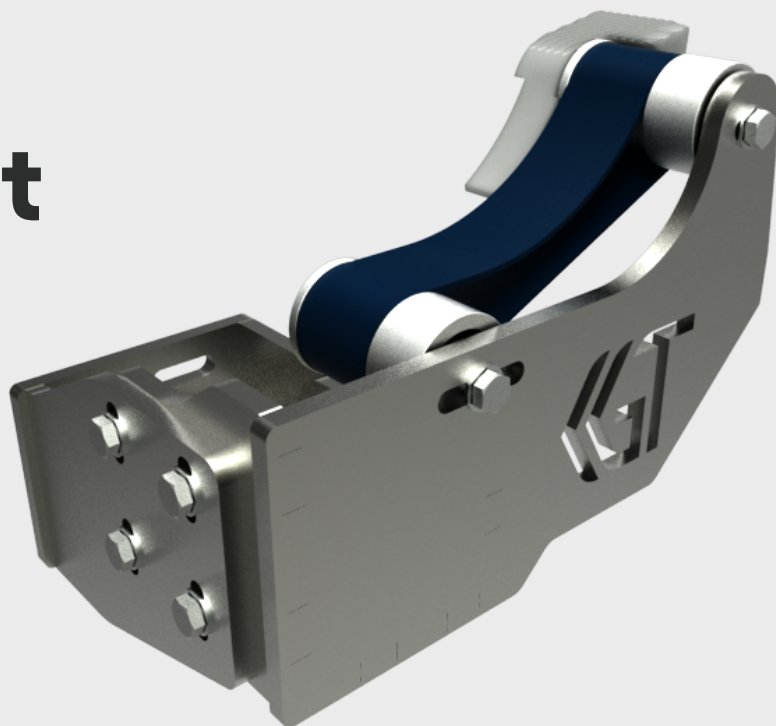
### T-CTU Combined Type Trigger Unit

It ensures that the fabric coming from the edge opener is fed to the needle without the edge folding again. Since there is no belt on the product, it eliminates the adjustment issues experienced during belt replacement. The roller trigger unit can be used to avoid the belt marks on the fabric that occur in belted trigger systems. Its ergonomic design makes it compatible with all RAM machines.



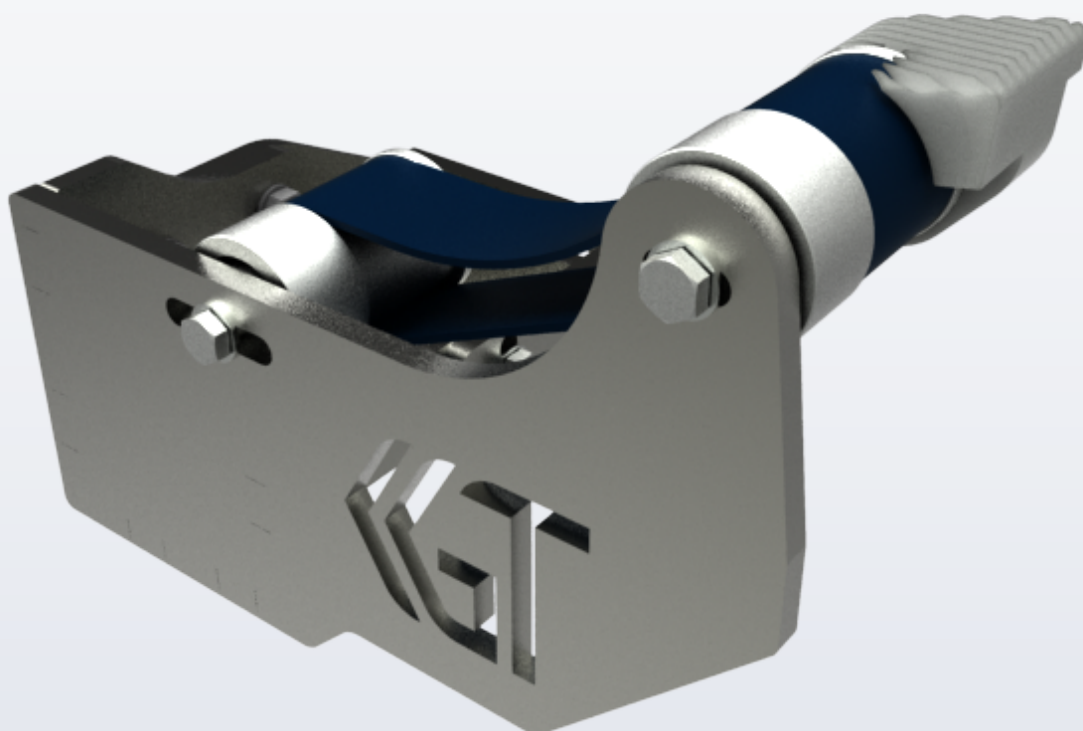
# T-STU

## Trigger Unit (Belt Type)



“

It is mounted at the chain input of RAM machines, open width sanfor, drying machines, and machines with equalizing units under the brush feed unit. It ensures that the fabric edge coming out of the edge opener is pinned without folding. Yarn is used in the transmission of the product in yarn trigger systems. Due to the working conditions of the yarn, periodic control and adjustment must be made due to wear and elongation.





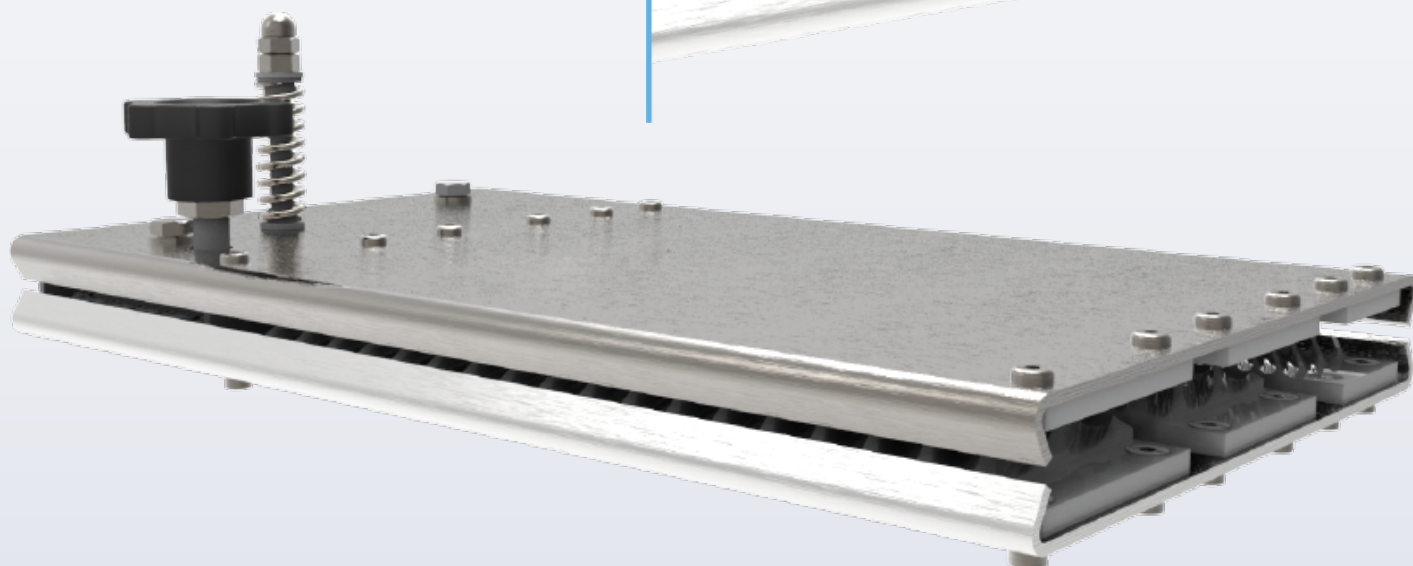
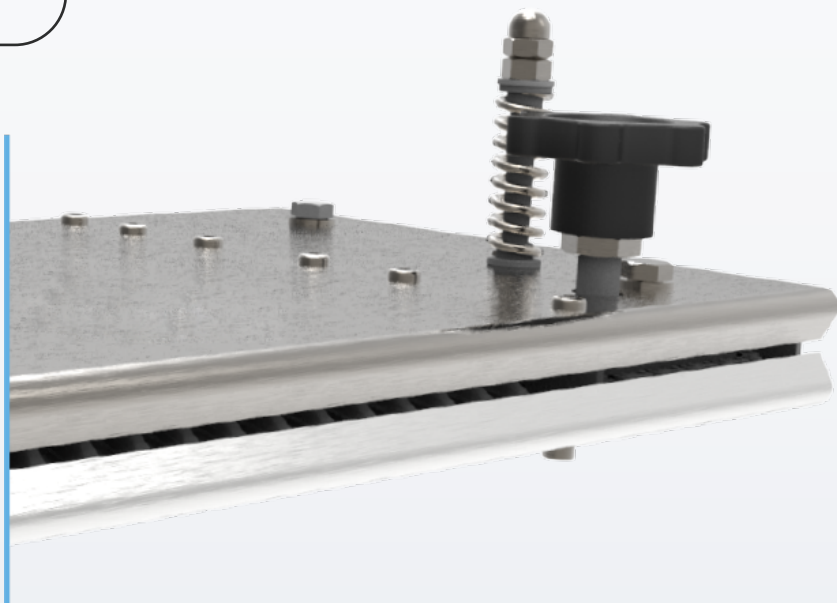
# T-MKD Edge Correction Unit



It is used to open fabric edge folds. Friction can be adjusted with height adjustment. The fabric flexes at sewing heights with spring pressure, allowing production to continue smoothly.

## T-MKD Edge Correction Unit

It is easy to clean, does not require maintenance, and is easy to install and operate. It can work on wet and dry fabrics.



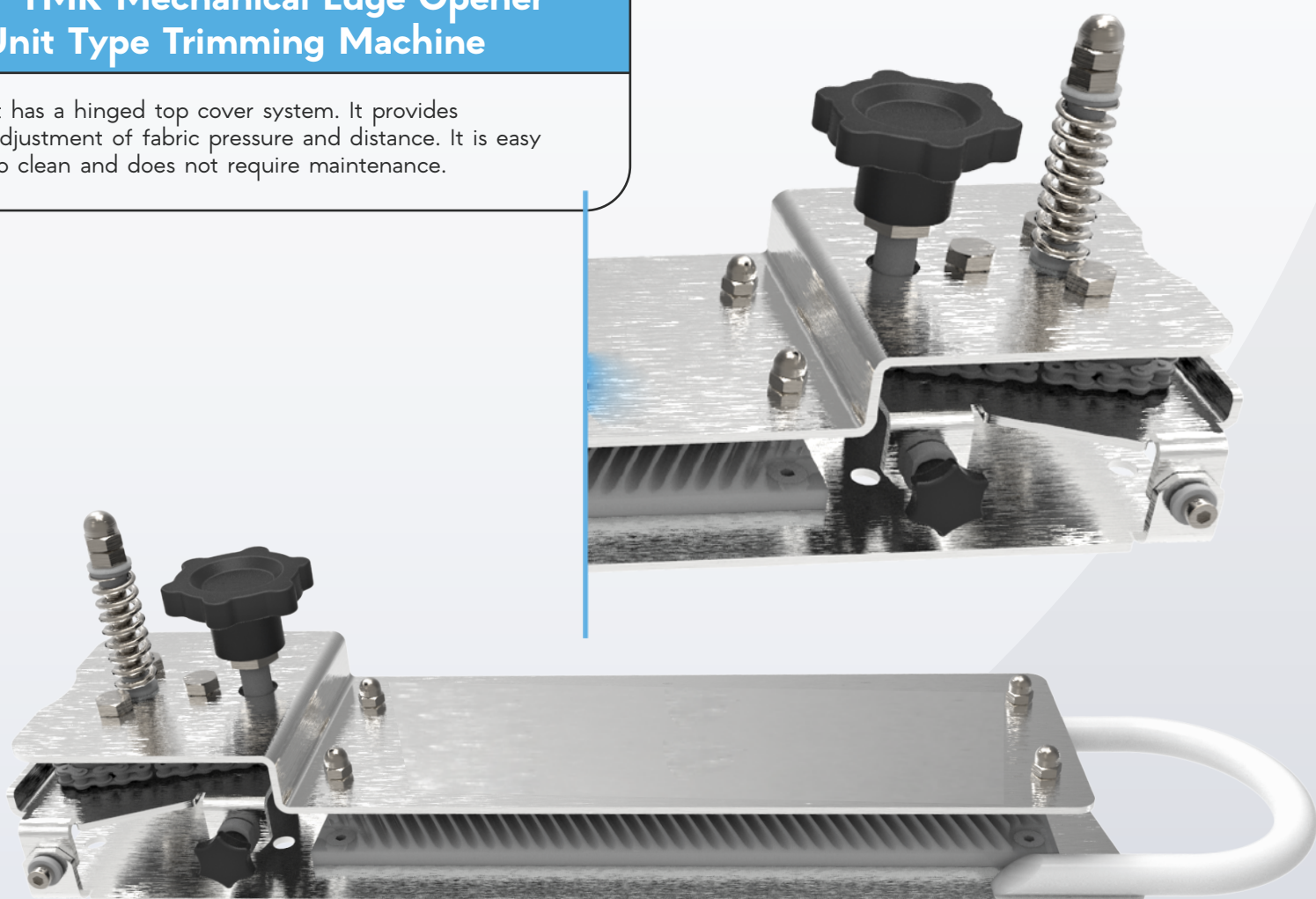
# T-TMK Mechanical Edge Opener Unit Type rimming Machine



It is used for edge opening operation in trimming machines. It is mounted just before the fabric enters the trimming blade. It ensures smooth surface trimming by opening the fabric edge just before entering the blade.

## T-TMK Mechanical Edge Opener Unit Type Trimming Machine

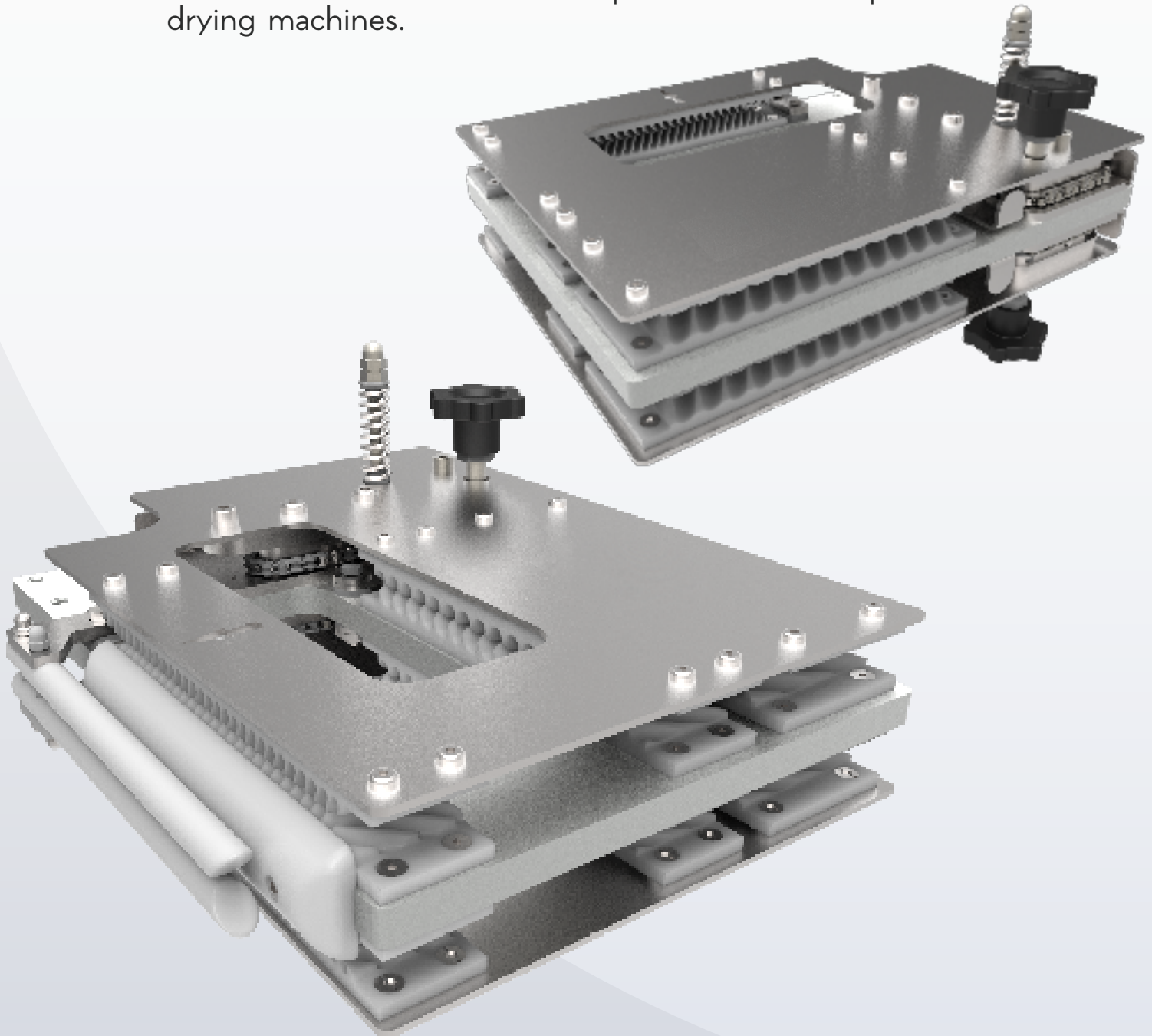
It has a hinged top cover system. It provides adjustment of fabric pressure and distance. It is easy to clean and does not require maintenance.



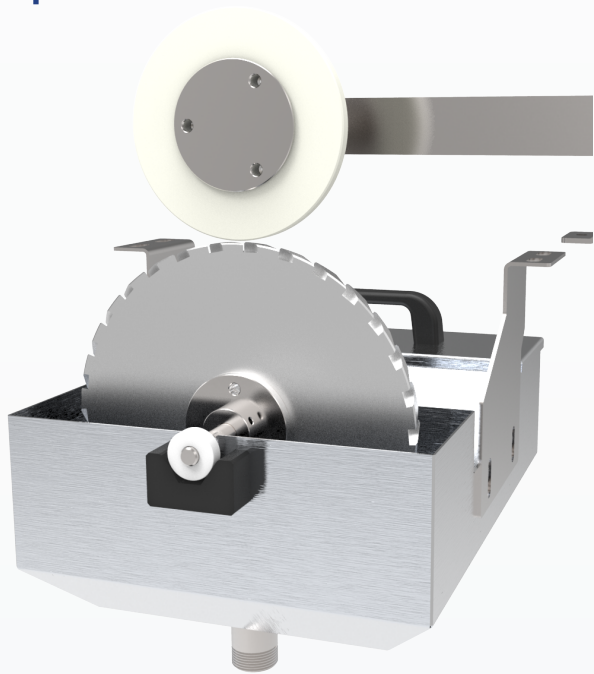
# T-TTK Edge Gluing Unit



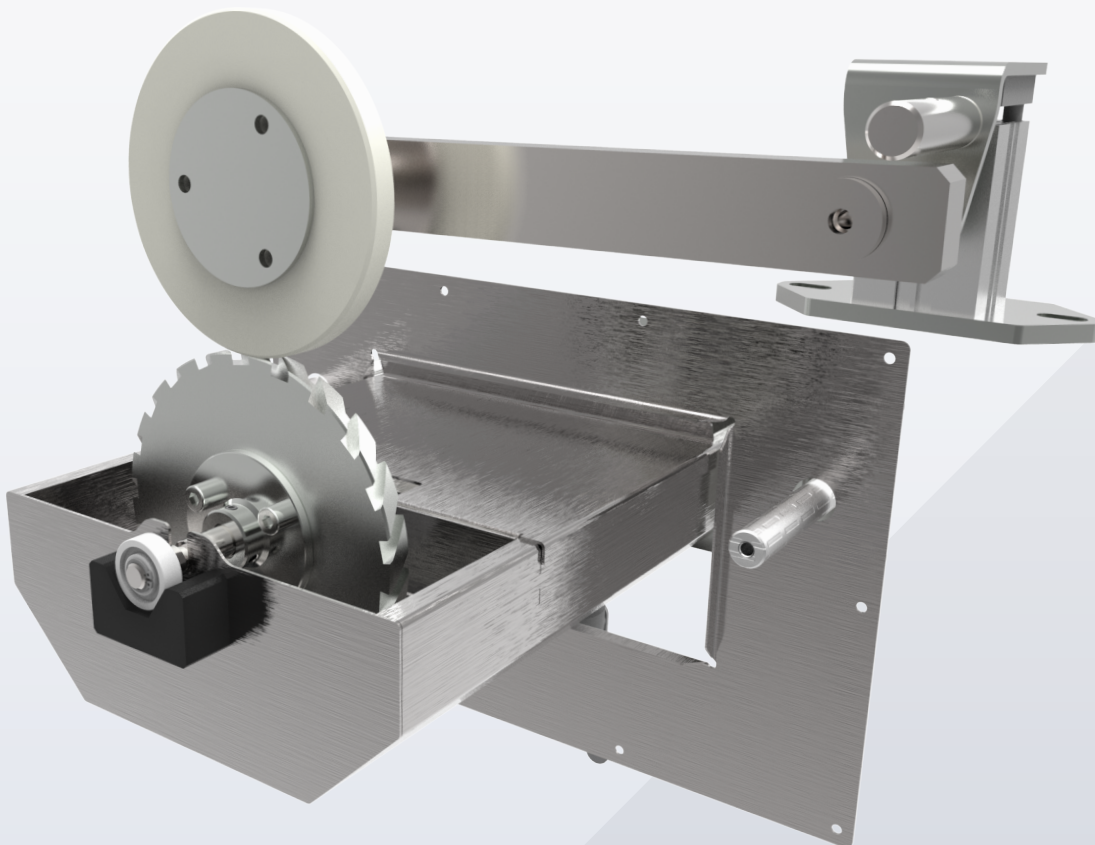
It is the unit used in the classic edge gluing system for edge gluing of knit fabrics. Edge gluing of knit fabrics is done by rotating the edge gluing wheel. Edge gluing unit can be produced as horizontal and vertical types. Horizontal type edge gluing unit is applied to all horizontal chain RAM machines. Vertical type edge gluing unit is suitable for vertical chain RAM machine, equalizing sanfor, equalizing drying machines.



# T-SKK Top Edge Gluing Unit



The top edge gluing unit is designed with easy-to-clean edge gluing and circulation tank and transfer wheel system. It has cutting and cross-cutting edge gluing wheel for minimum edge gluing consumption and adjustable edge gluing amount according to process conditions. It is equipped with a reserve tank circulation pump system to keep the paste at a constant viscosity.



2015





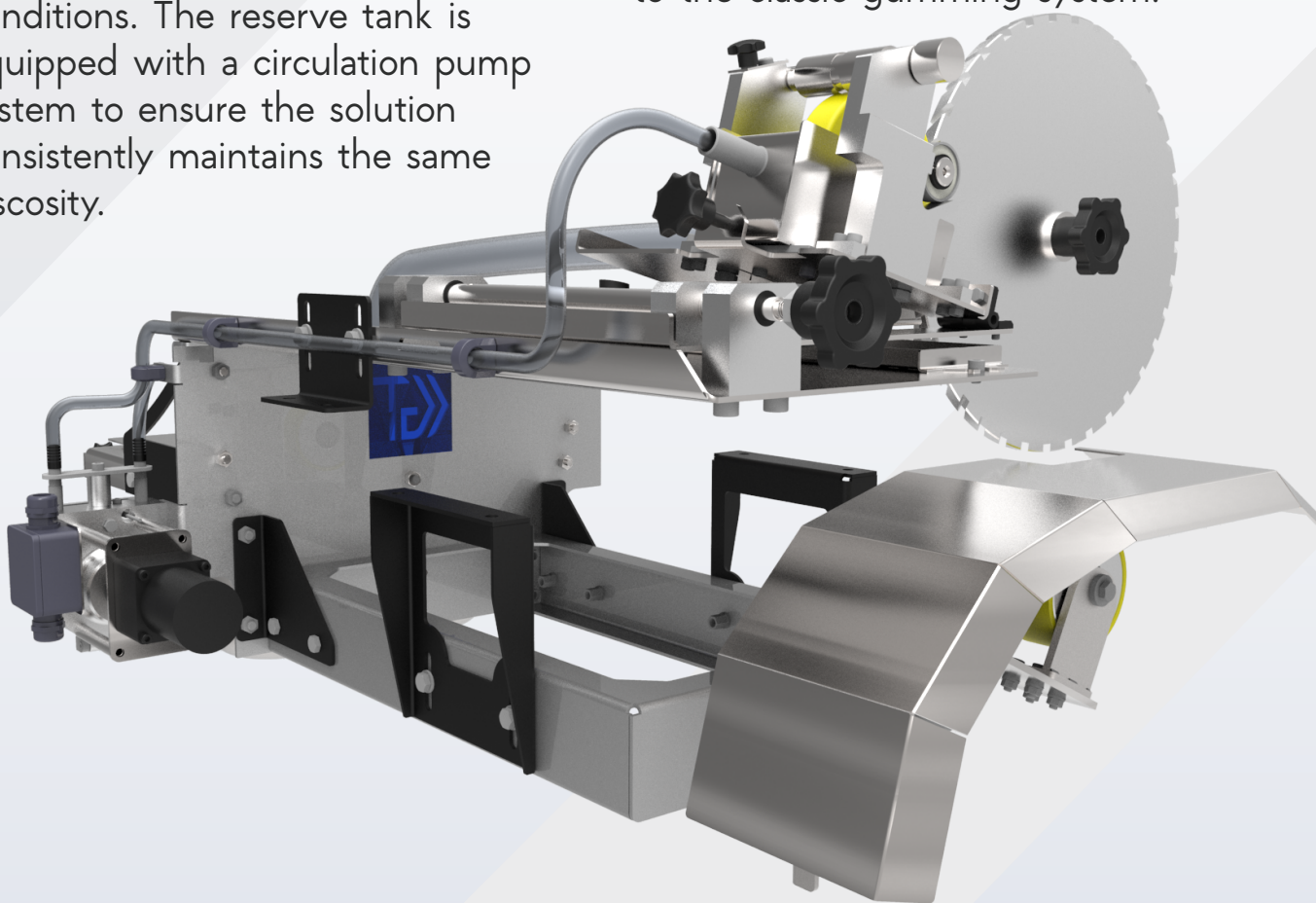
# T-UKK

## Upper Edge Gumming Unit



In classic edge gumming systems, the edge gumming wheel and gum tank are located beneath the rails. The gumming process is carried out by applying pressure to the fabric. In the upper gumming system, the gumming wheel and gum tank are positioned on top of the rail. Gumming is performed on the upper part of the fabric. In classic systems, due to mechanical constraints, it is not possible to bring the edge gumming disc closer than 4-5 mm to the chain. As a result, the amount of waste in classic system gumming increases. In the upper gumming system, since the edge gumming disc and gum tank are positioned above the fabric, the edge gumming system can be brought as close to the needles as desired. Therefore, the edge waste is less in the upper gumming system compared to the classic gumming system.

The upper edge gumming unit is designed with an easily cleanable edge gumming and circulation tank, as well as a transfer wheel system. To minimize edge gum consumption, it features a notched and cross-toothed gumming wheel and scraper system that allows for the adjustment of the edge gum amount according to process conditions. The reserve tank is equipped with a circulation pump system to ensure the solution consistently maintains the same viscosity.



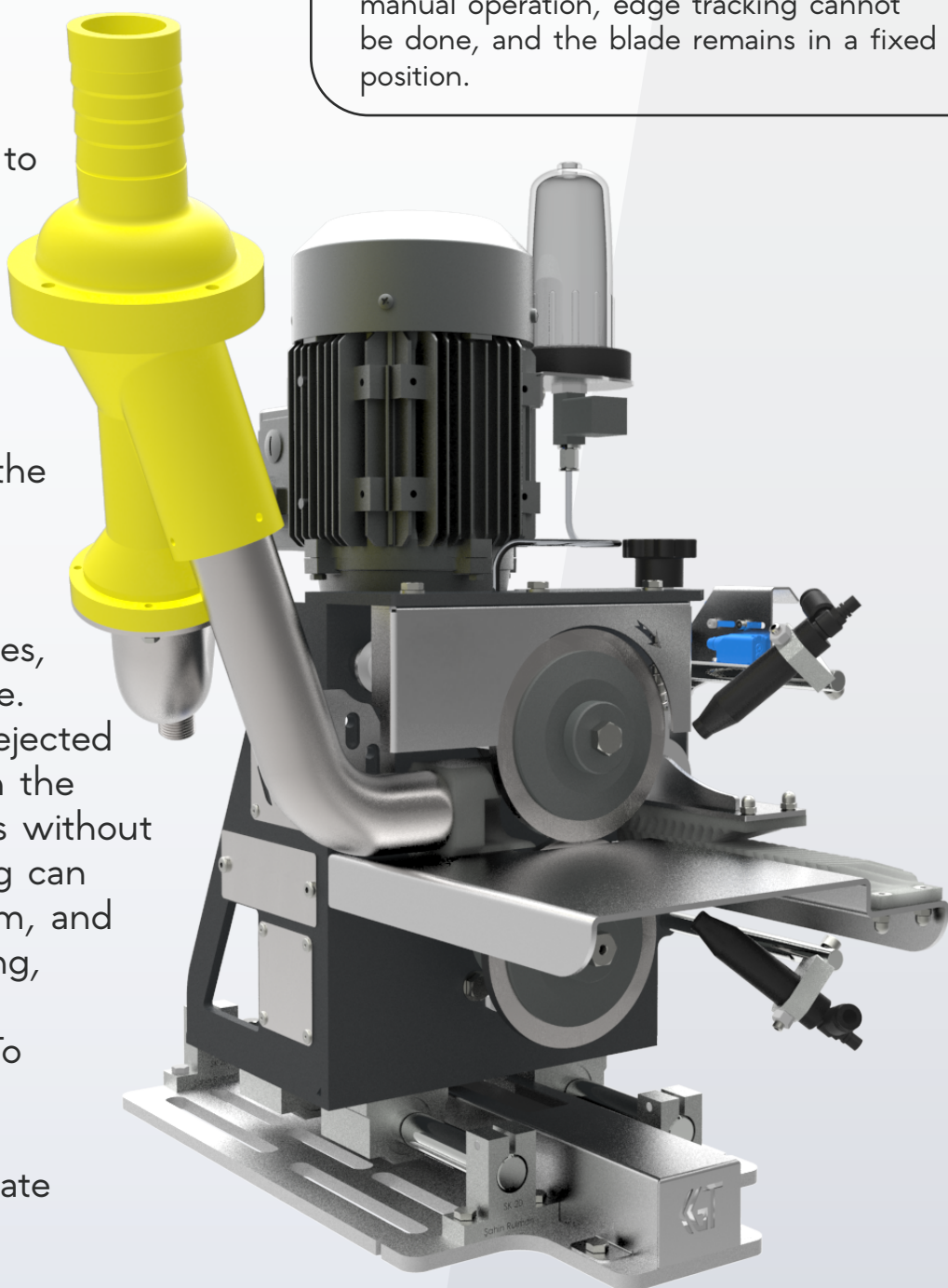
# T-BKU Edge Cutting Unit

“

This unit is a system that allows the fabric edge to be cut to the desired extent. It can be applied to both glued or unglued fabrics. It is mounted on the chain output of RAM machines and equalizing open-width sanfor machines. It can work synchronized with the chain speed or at a fixed speed. Edge cutting is done after the fabric is separated from the needles, resulting in minimal waste. Edge cutting wastes are ejected outside the machine with the exhaust system. In fabrics without edge gluing, edge cutting can be adjusted from 12-13mm, and in fabrics with edge gluing, edge cutting can be adjusted up to 3-4mm. To achieve minimum edge cutting waste, the chain input must have appropriate technical specifications.

## T-BKU Edge Cutting Unit

Edge cutting operation can be done automatically or manually. In automatic operation, edge tracking is done with the fabric edge sensor. The distance of the sensor to the cutting blade can be adjusted to achieve the desired cutting size. In manual operation, the thickness of the blade is adjusted manually. Since the sensor tracking circuit is disabled in manual operation, edge tracking cannot be done, and the blade remains in a fixed position.



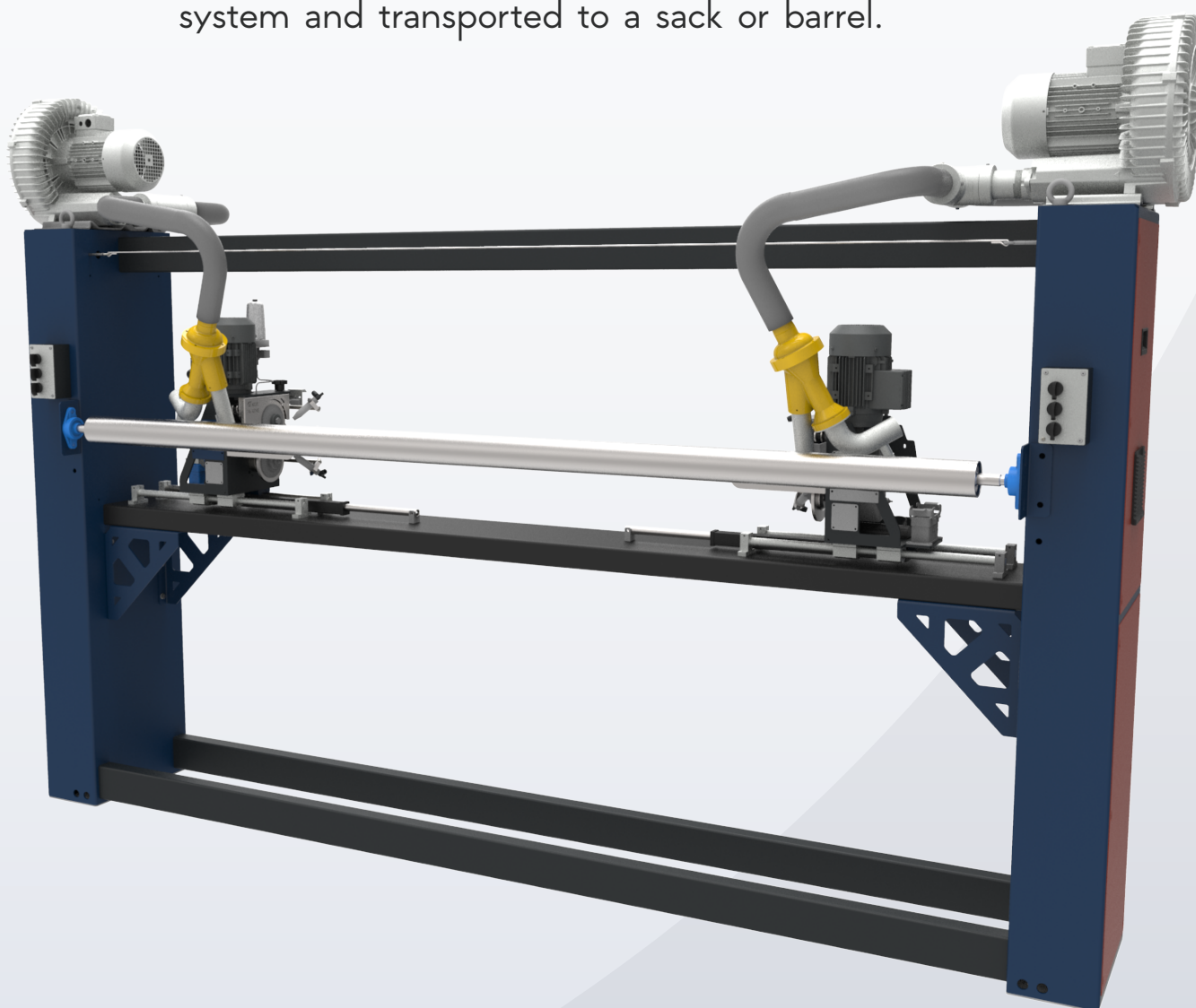
# T-KKH

## Edge Cutting System (External System)



It is used to clean the edges of the fabric. It operates without RAM or open-width sanfor. The fabric can be supplied from the frame or the dock. The cleaned fabric can be wound onto the frame or the dock.

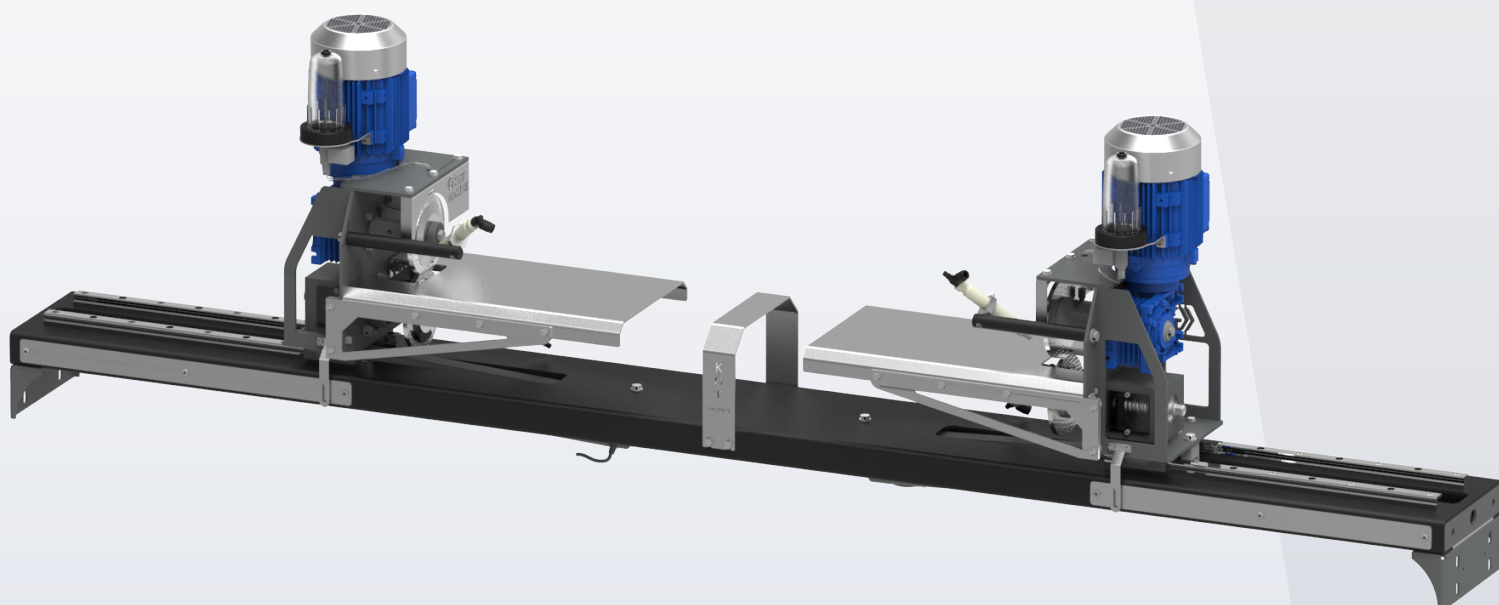
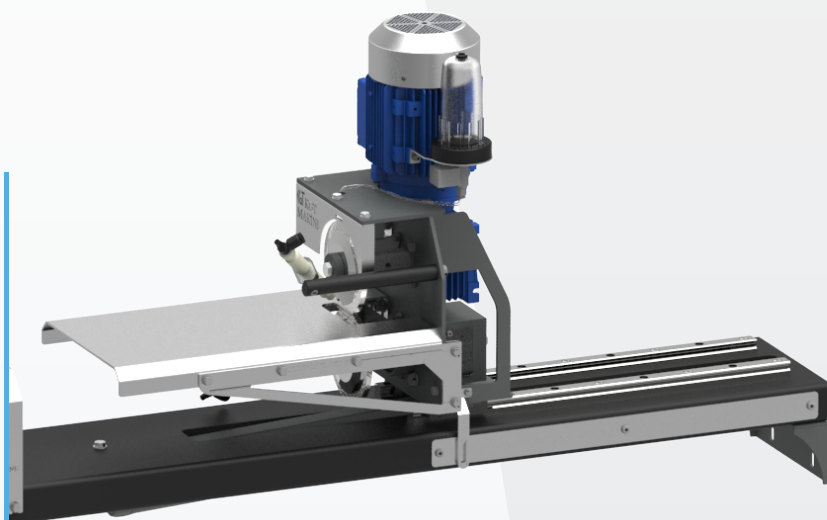
While edge cutting works under manual control, it performs the operation of fixing the width when in fixed width cutting mode. When edge cutting operates under automatic control, it works by tracking the edge, enabling automatic edge tracking. In automatic control, the width of the fabric to be cut can be adjusted. The cut waste is pulled by the blower system and transported to a sack or barrel.



# T-TBK Transfer Printing Edge Cutting Unit

“

It is mounted at the output of the transfer printing machine. It cuts off unwanted edge excesses of the fabric after printing. The cutting distance is adjusted manually. The blade continues cutting from the set position. After printing, the fabric is rid of undesired ends and excesses.



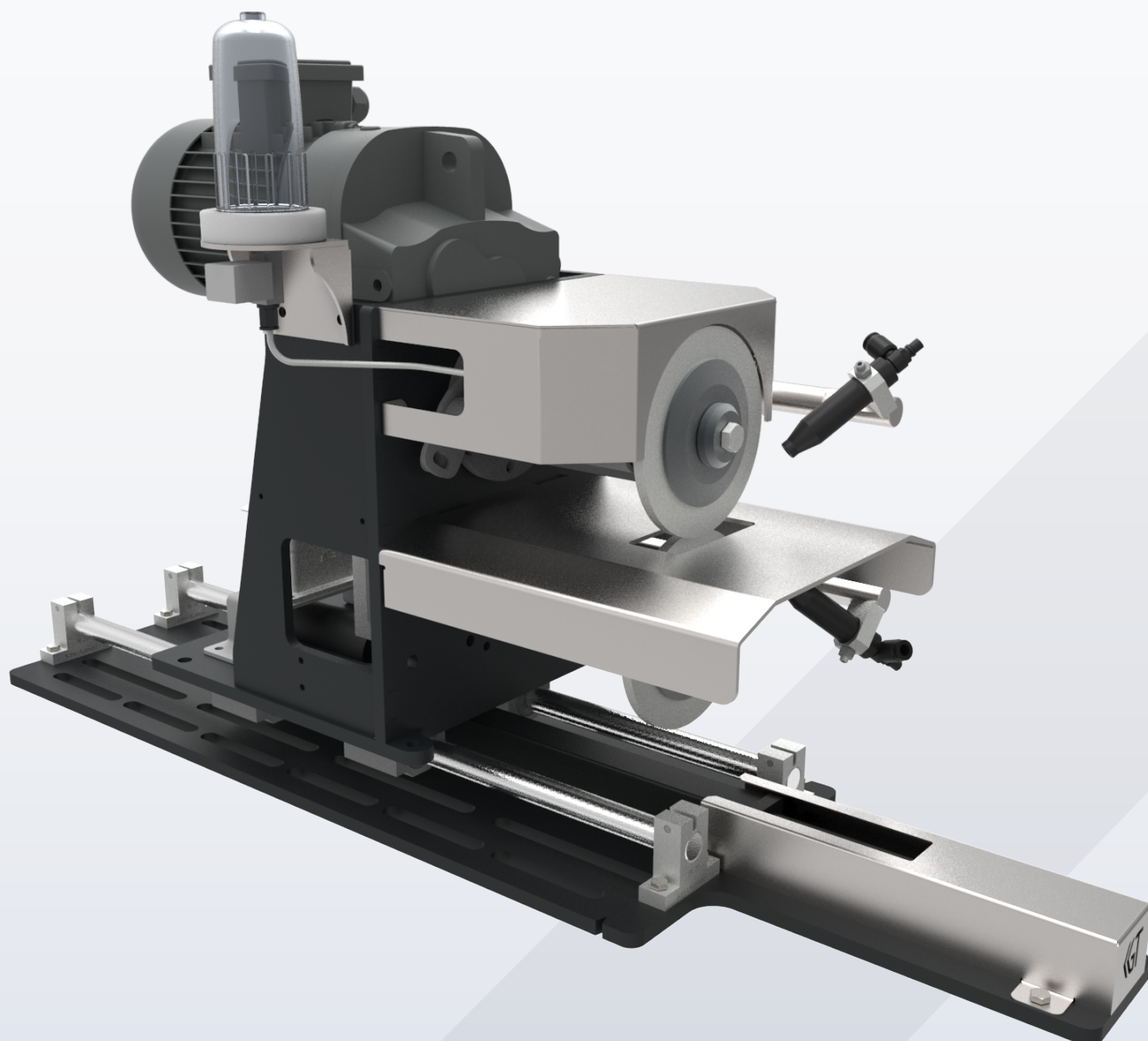


# T-KKU

## Thick Fabric Edge Cutting Unit



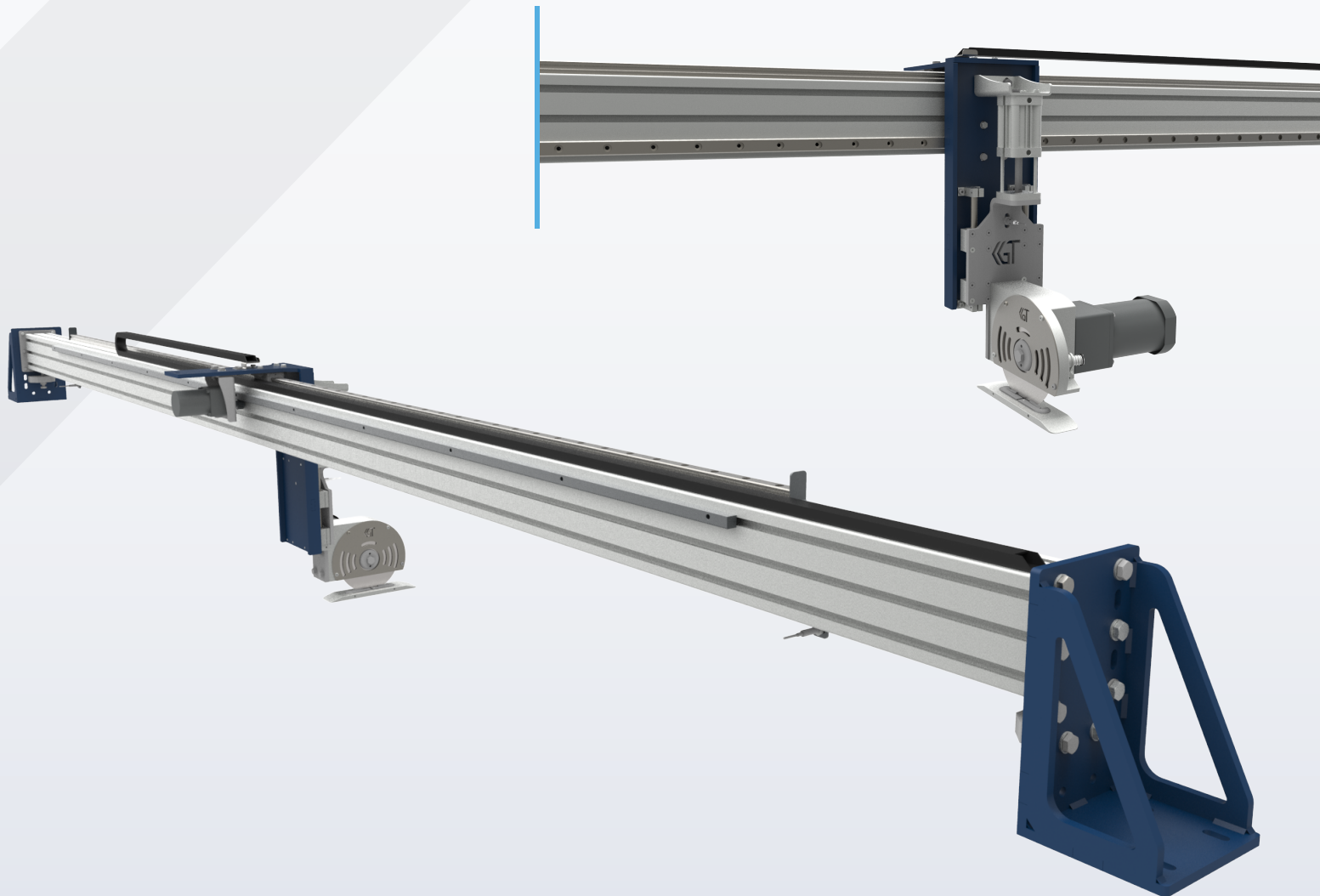
It is used to cut the edges of thick carpets and fabrics. The edge cutting waste size is maximum 70mm. It is mounted on the output of carpet RAM and similar machines. The cutting location is adjusted manually. The cutting head continues cutting from the set position. The rotation speed of the blade can be adjusted. The blades are automatically lubricated to reduce dullness and heating. The blade pressure adjustment system allows for adjustment.



# T-OKU Middle Cutting Unit



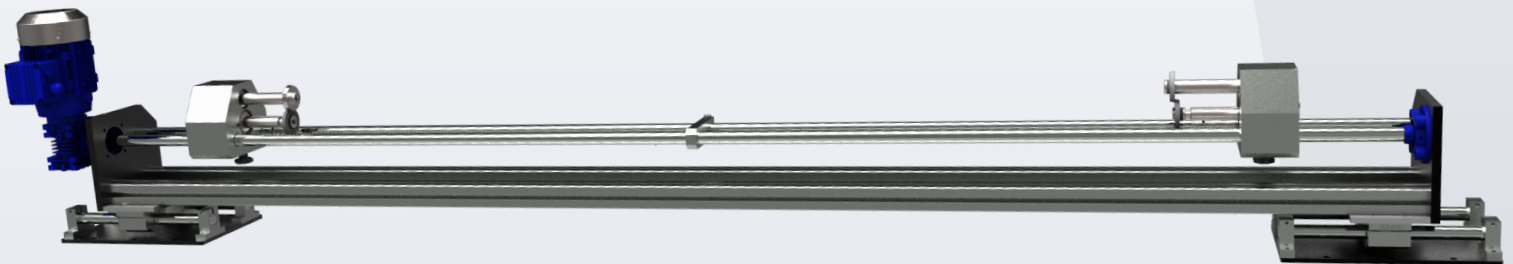
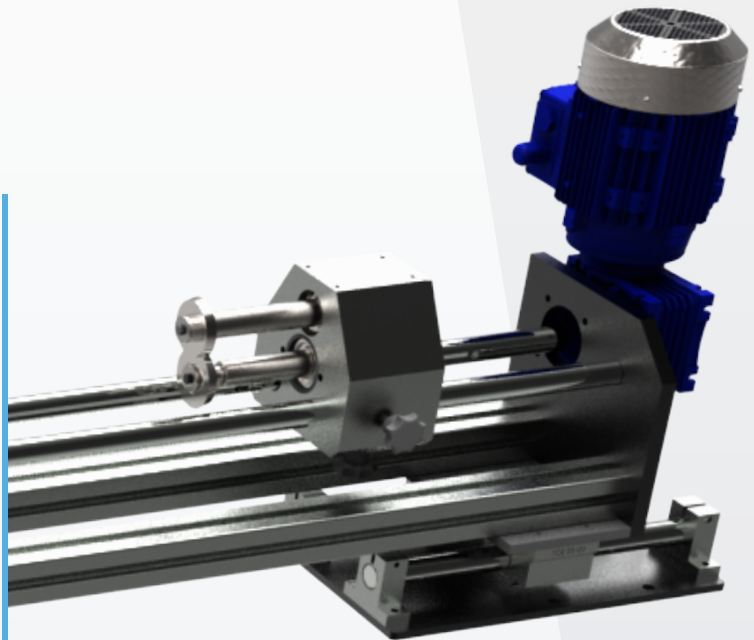
It is used for slicing the fabric in the production process. The number of heads can be adjusted according to the desired slicing quantity. When the blades start to dull, slicing is done manually with the tensioning system on it. Production can continue during this process. The cutting width is adjusted manually and remains fixed. When no slicing is done, it is lifted up with a pneumatic piston. It is easy to maintain and use.



# T-KMK Lamination Machine Edge Cutting Unit

“

It is used to clean the edges of the fabric after lamination. It is mounted at the end of the lamination line. The cutting distance is adjusted manually and fixed with a locking system. The maximum cutting thickness is 70mm.



# T-CPU Paste Units

“



It is used at the output of RAM, equalizing, and drying machines. It takes the fabric from the machine and transfers it to the frame. It spreads the fabric onto the frame with a swinging arm. The length of the spreading arm can be adjusted with mechanical distance adjustment. It transfers the fabric by pulling it with a traction cylinder. The synchronization of the traction cylinder with the machine is provided by the baler system. The pressure of the fabric can be adjusted with the pressure adjustment of the pneumatic system in the baler system. The speed of the fabric spreading arm can be adjusted independently of the machine speed. The traction cylinder motor and the swinging arm motor are separate.

2015



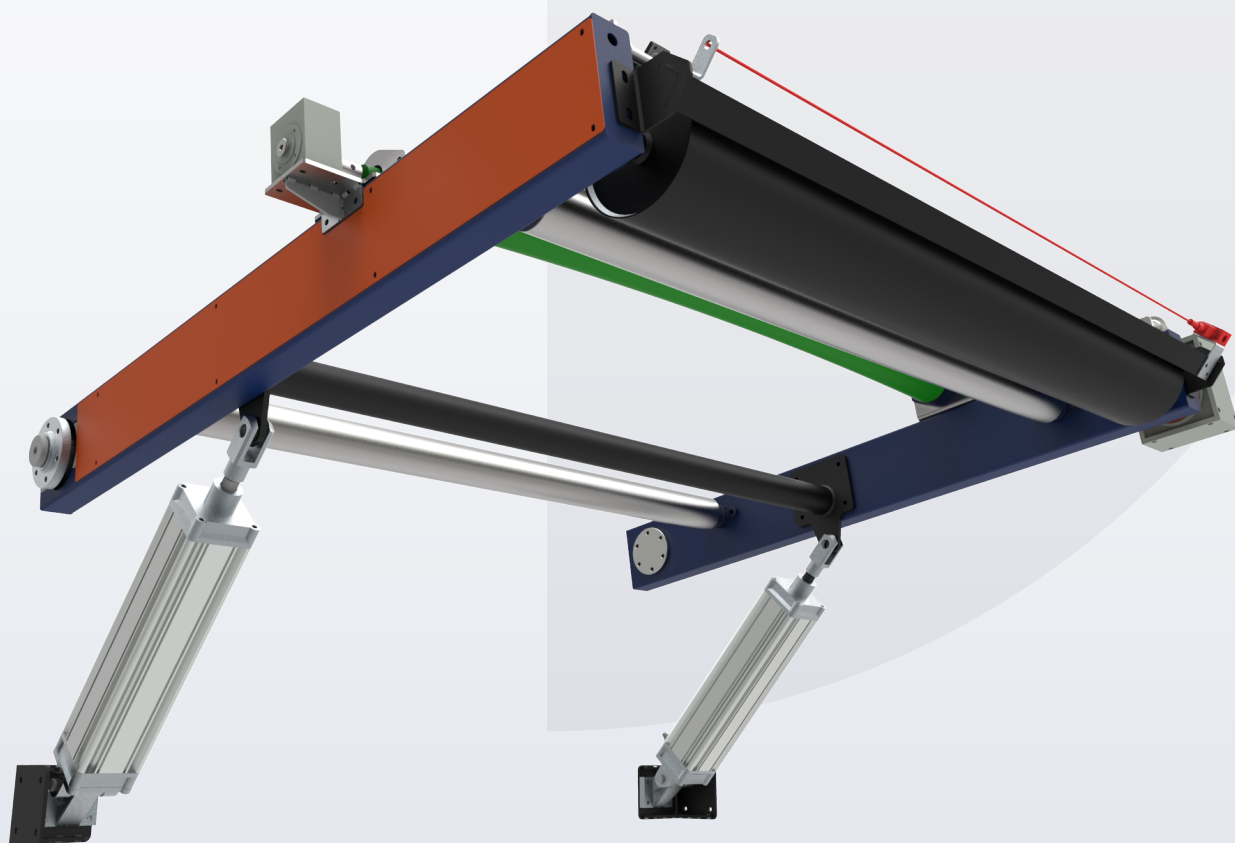
# T-CDS Fabric Winding Unit

“

It is used at the output of RAM, sanfor, drying, etc. machines. It winds the fabric onto the fabric frame at the machine output. It operates by applying pressure to the fabric using pneumatic pistons on its arms. The fabric pulled by the traction cylinder is wound onto the fabric cylinder. Before the traction cylinder, a banana roller and a spreading system can be used.

## T-CDS Fabric Winding Unit

There is a protective cover on the cylinder for safety, and a safety switch is available.

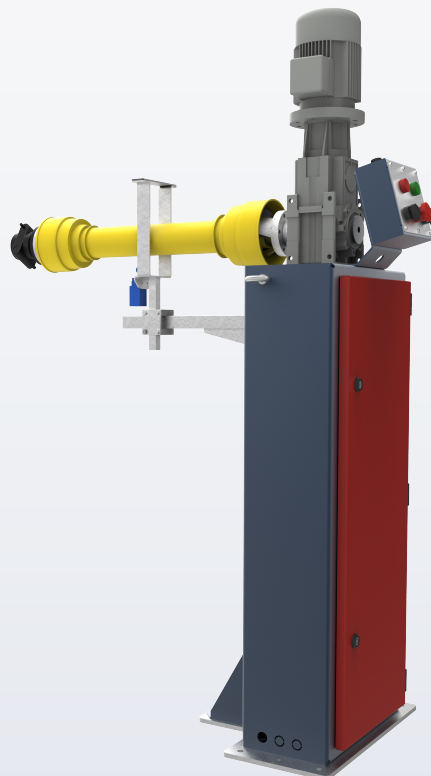
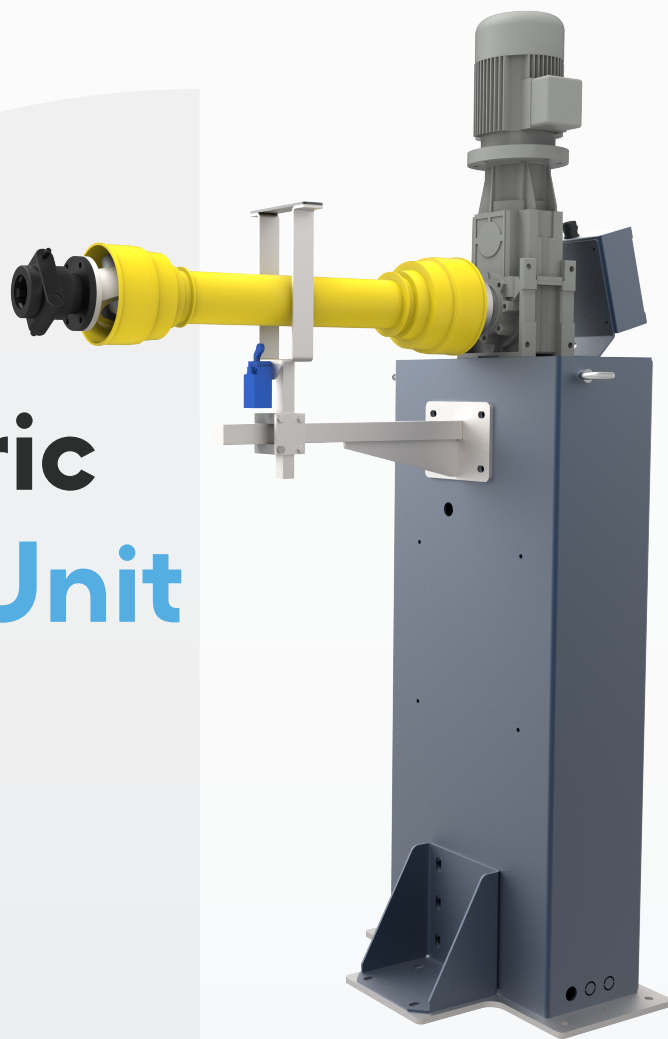




# T-MTS Central Drive Fabric Winding Unit

“

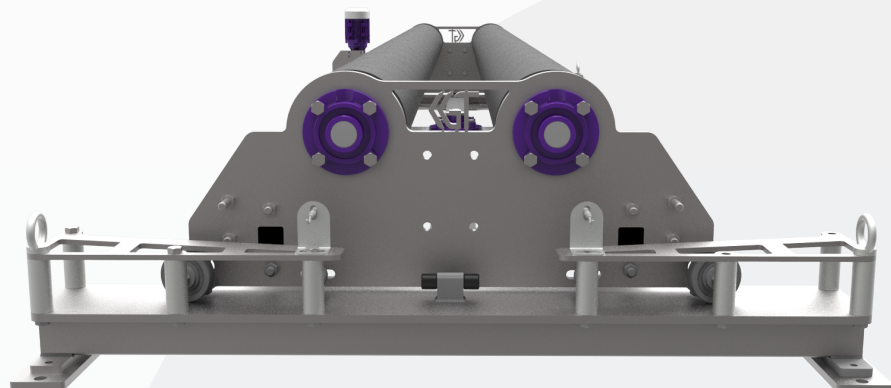
This unit is used to ensure that the fabric is continuously wound onto the fabric frame at the same tension after exiting the RAM machine, etc. The production is carried out by equipping with necessary equipment according to the machine and fabric process to be used. A safety cover and safety switch are available for safety.



# T-HBO Carpet Cradle Aligning Unit

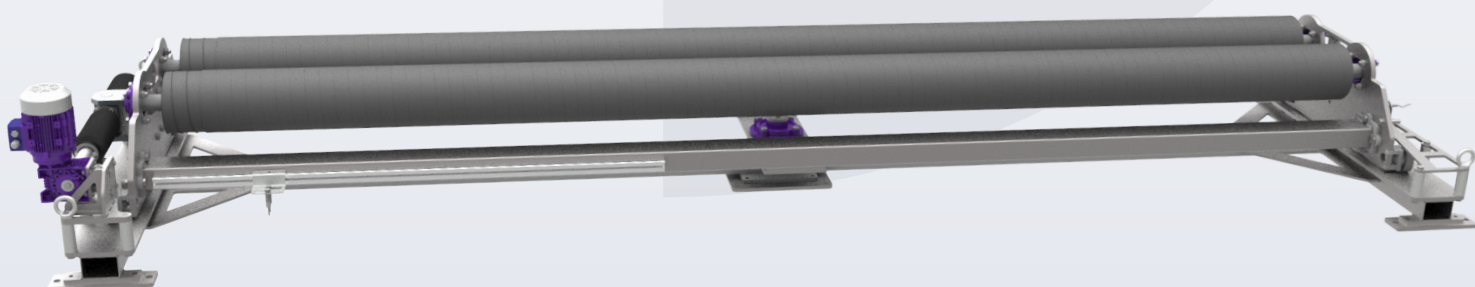
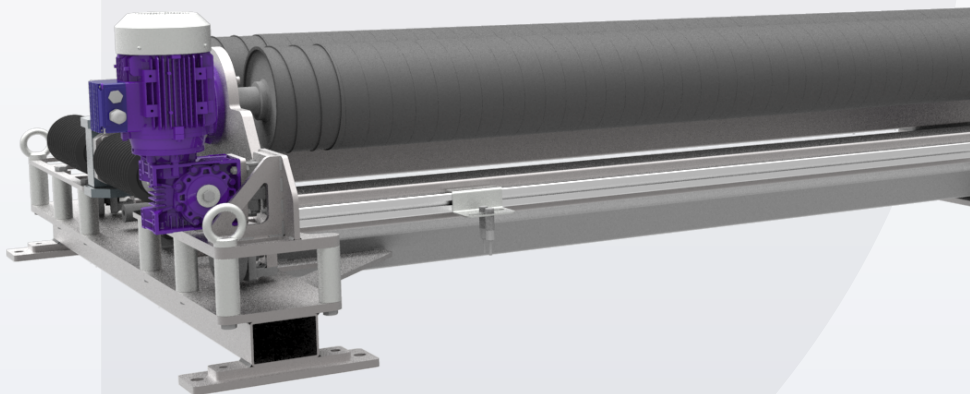


This unit is used for aligning carpets and similar fabrics at the entrance of the machine.



## T-HBO Carpet Type Centering Unit

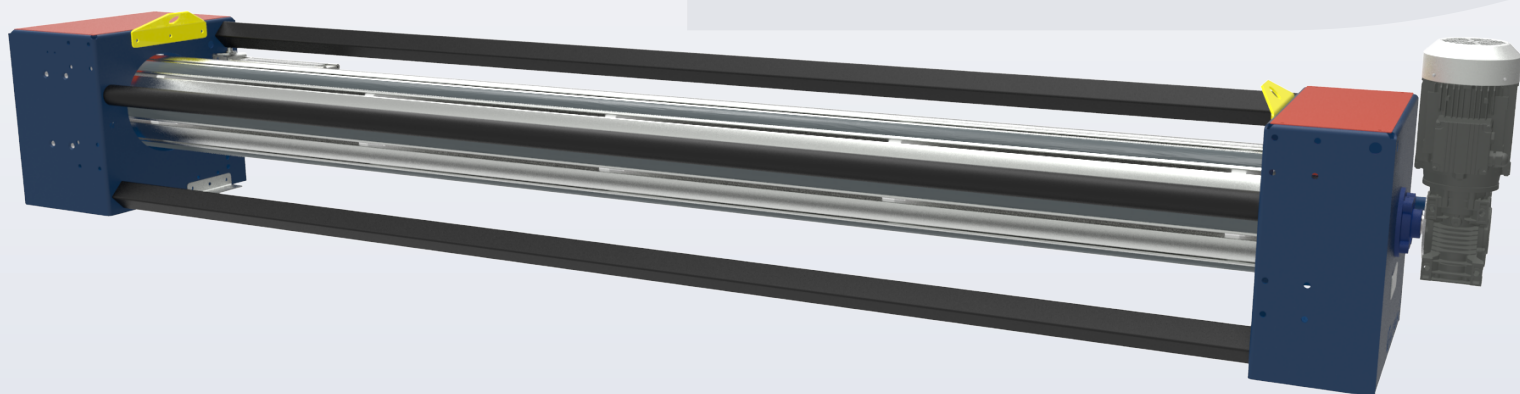
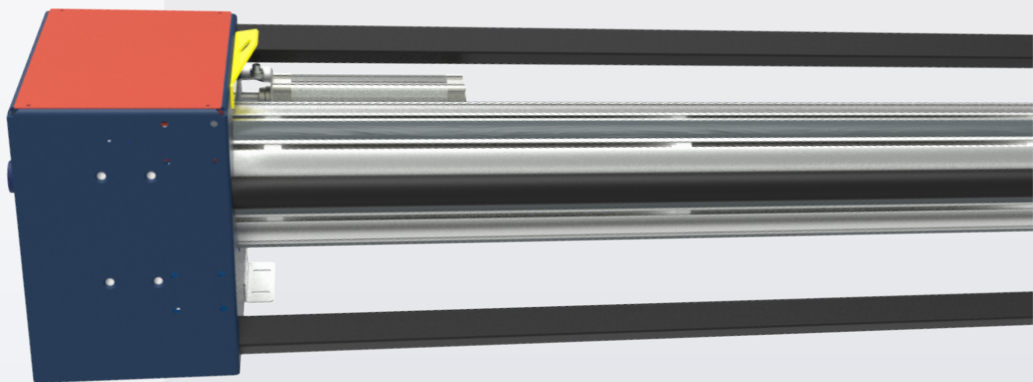
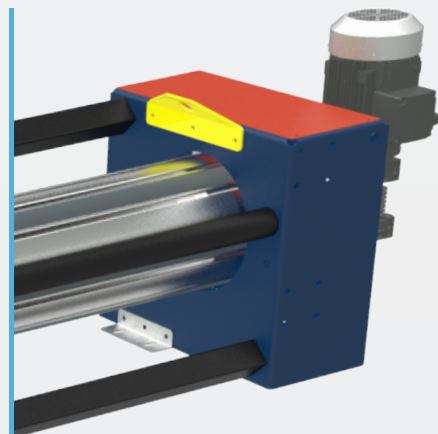
It is designed for heavy types of carpets and fabrics. The cylinders are silicone-coated to ensure better grip on the fabric.



# T-HCO Carpet Slide Aligning Unit



It is designed for carpets and thick fabrics. It ensures the alignment of the fabric to RAM machines, open width sanfor, and open width drying machines by aligning it to the right and left with pneumatic piston movement. The position of the fabric is checked with a sensor at the output of the aligner. It is equipped with 12 slats. 6 slats have rubber bands, and 6 slats are made of aluminum.



# T-HFA

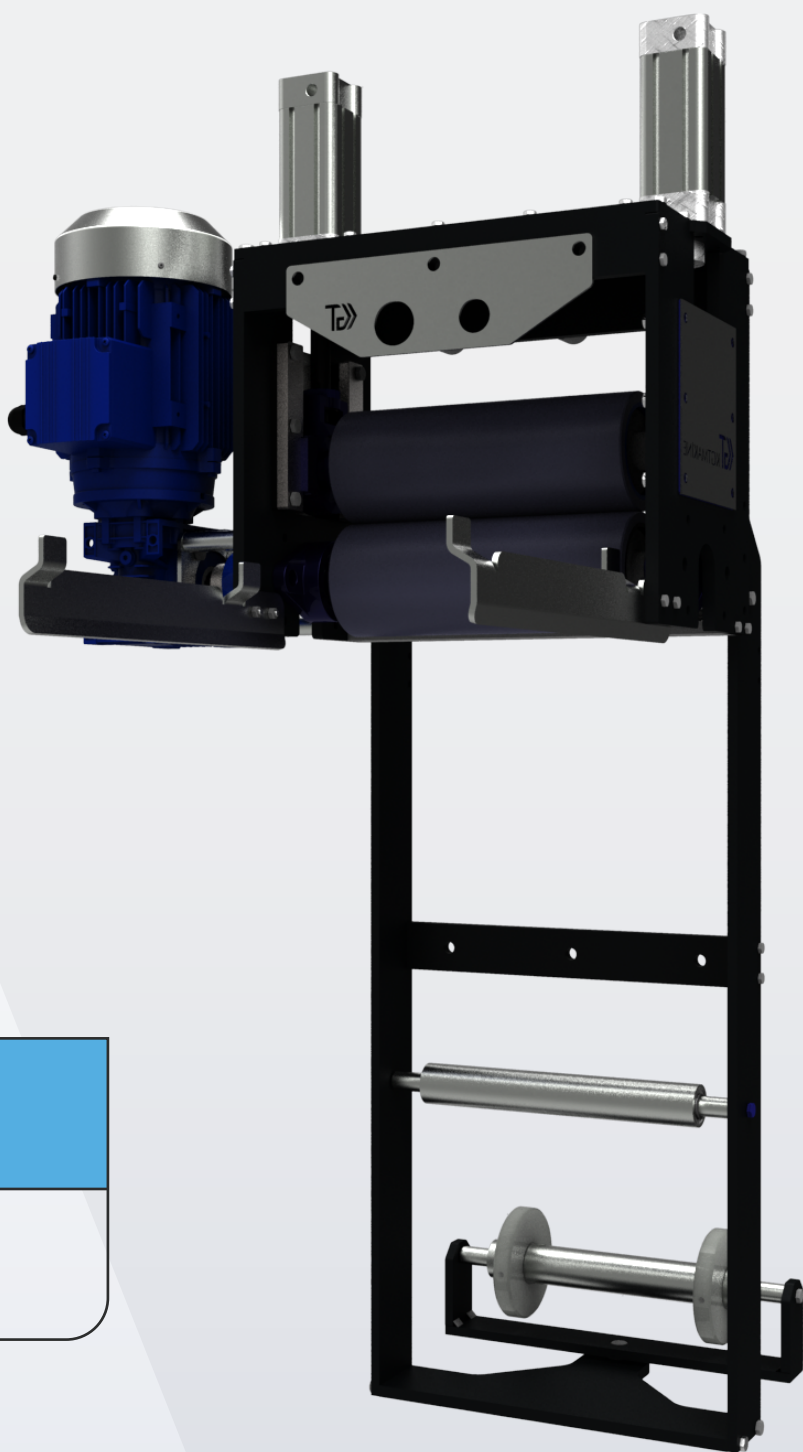
## Carpet Edge Cutting Machine Waste Unit



Used for transporting the waste to the bags after cutting the edges of various types of carpets and similar raw or coated fabrics. This unit is mounted on the outlet frame of the ram. Pneumatic pressure cylinders are used to ensure that the fabric moves away from the machine.

### T-HFA Carpet Edge Cutting Machine Waste Unit

It is used as two separate units, right and left.

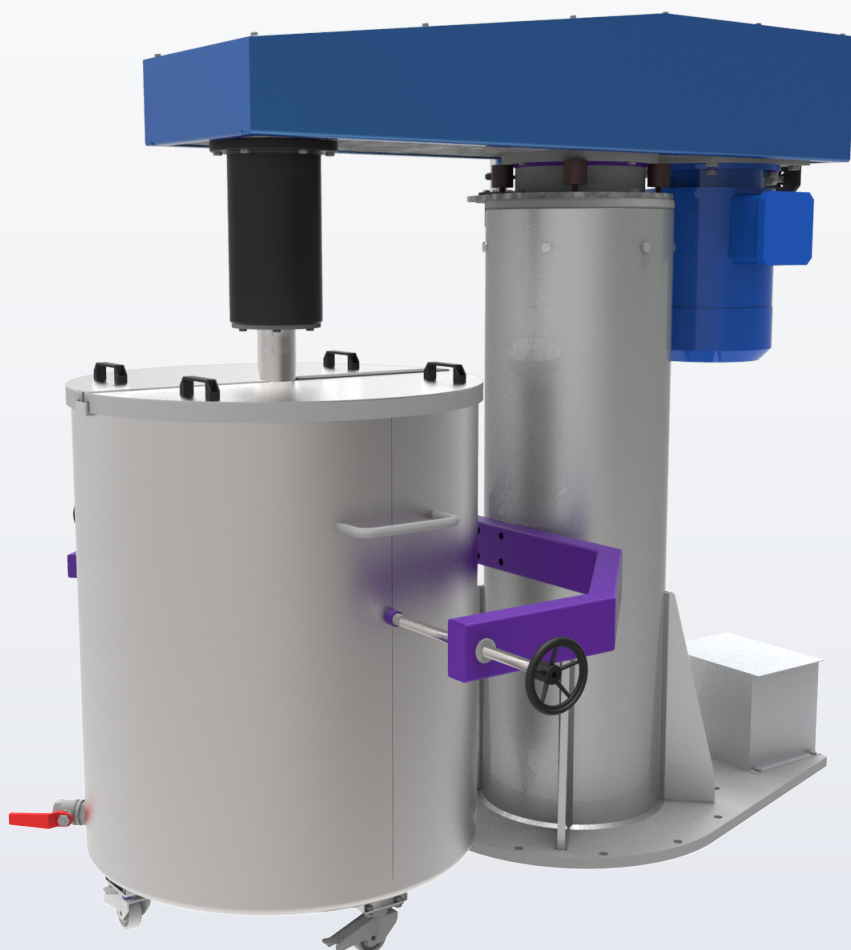
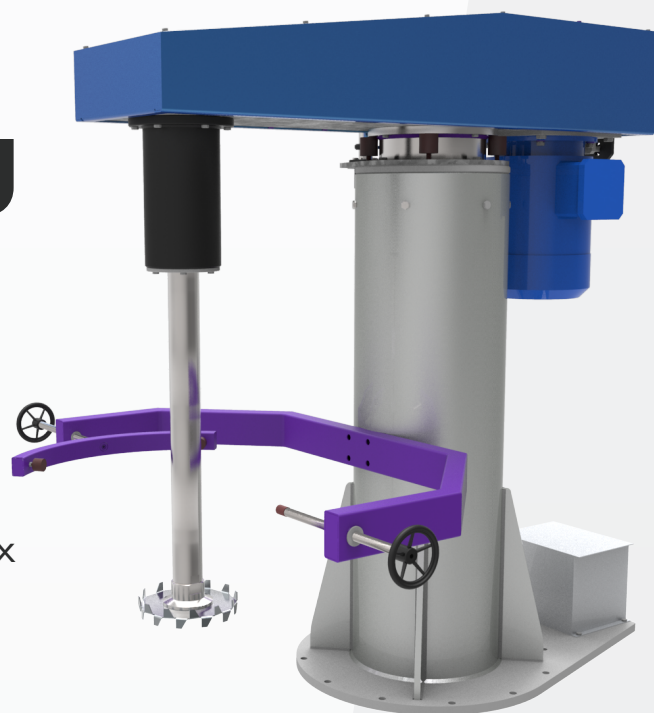


# K-BKM

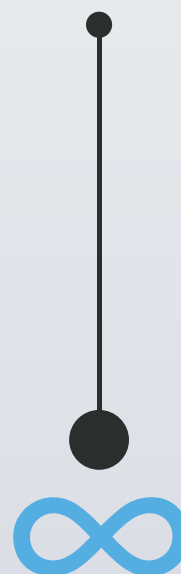
## Liquid Mixing Mixer Unit



It is produced to effectively mix and crush medium and high viscosity liquid groups (water, solvent, printing inks, building chemicals, food, and pharmaceuticals).



2015





# K-MKM

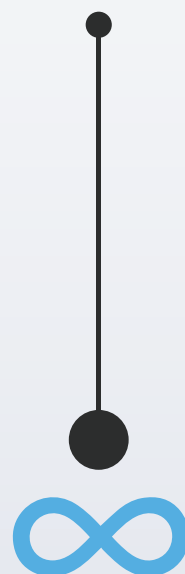
## Mini Mixing Mixer

“

It is produced to effectively mix and crush medium and low viscosity liquid groups (water, solvent, printing inks, building chemicals, food, and pharmaceuticals).



2015



# K-LKM

## Laboratory Mixing Mixer

“

It is a mixer produced for laboratory studies and pilot product studies in low and medium density products. The up and down movement is done manually. Speed control is done by a frequency inverter. It can also be produced as Atex-Ex-Proof

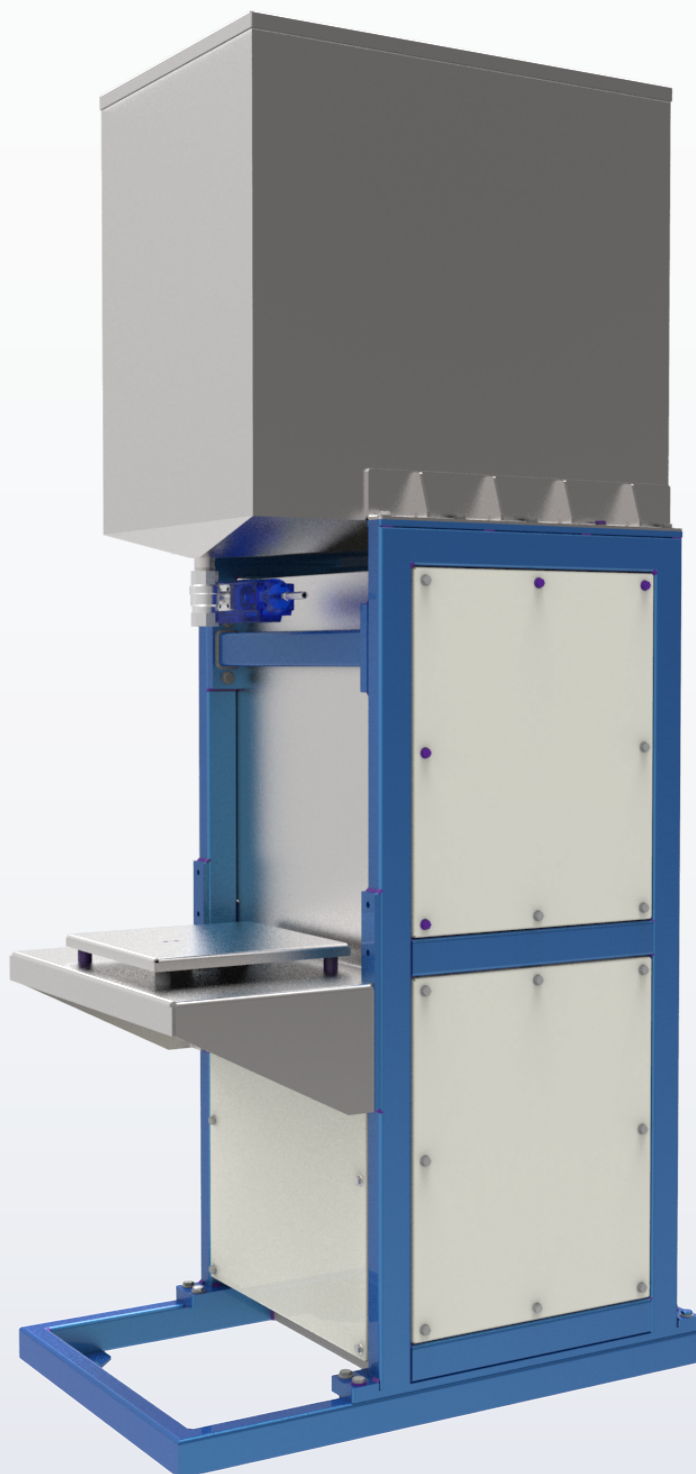


# K-SDU

## Liquid Dosing Unit

“

Liquid filling machines are machines that measure and fill liquids. The filling process is done by weight measurement. Manual filling is also possible. The filling weight is entered into the screen. The Start button is pressed. When the desired weight is reached, the valve is closed to end the process.



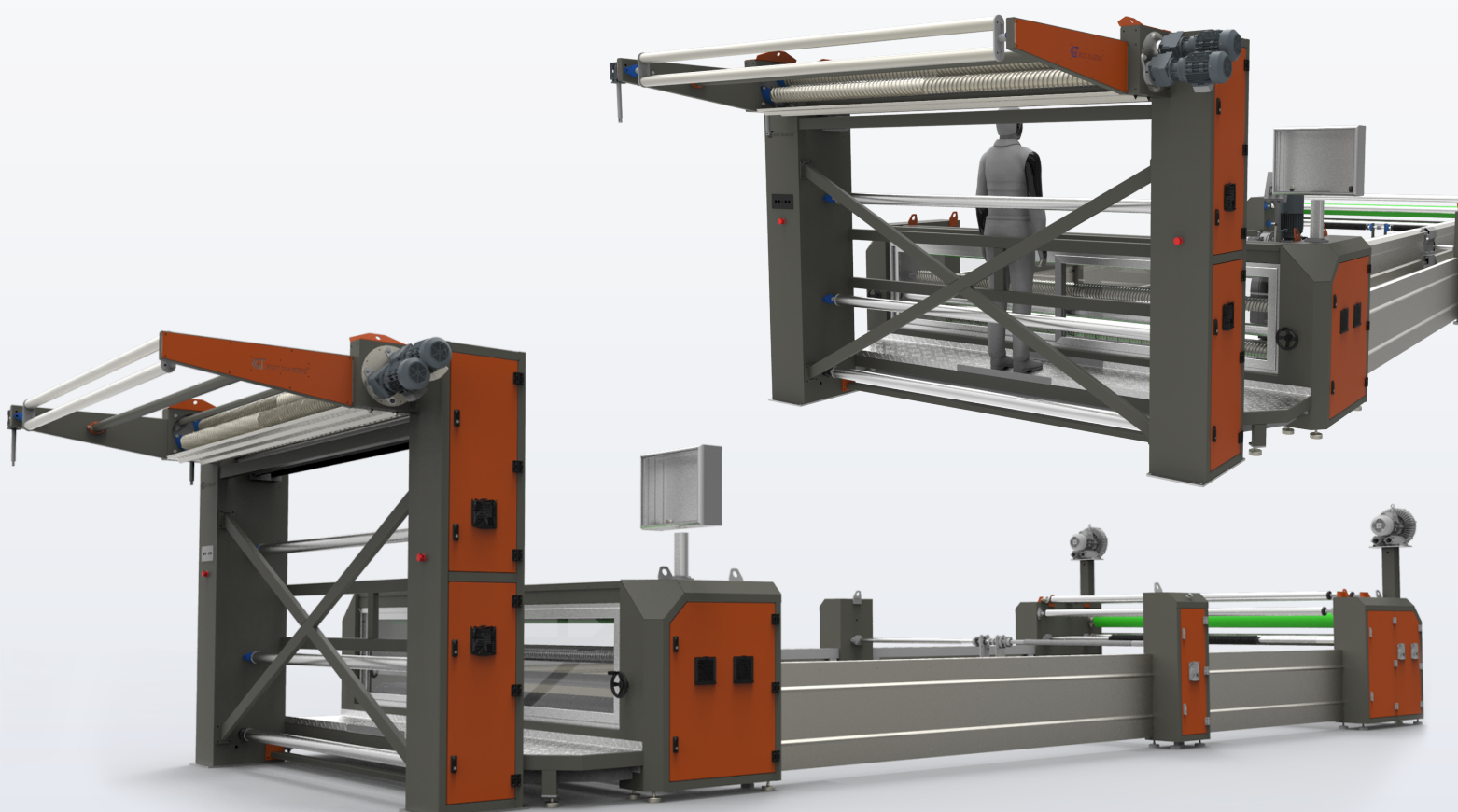
# T-AEU Open Width Equalizing Unit



The open width chain equalizer machine is used in front of the drying machine and sanforizer. It is used for adjusting the length and width of the fabric. The product groups that make up the open width equalizer are as follows:

- ◆ Fabric entry
- ◆ aligner
- ◆ helical opener
- ◆ chain group
- ◆ fabric needling group
- ◆ steaming group
- ◆ edge sealing
- ◆ edge drying
- ◆ edge cutting, and chain width adjustment system.

All settings and controls are done through the touch screen.

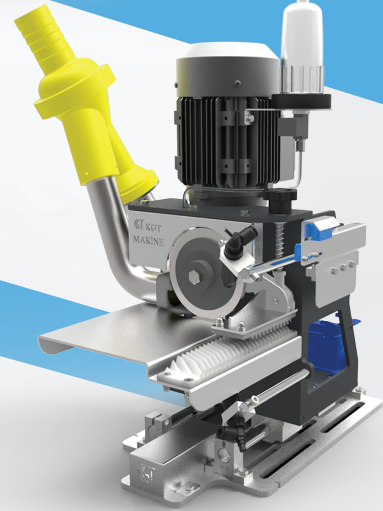
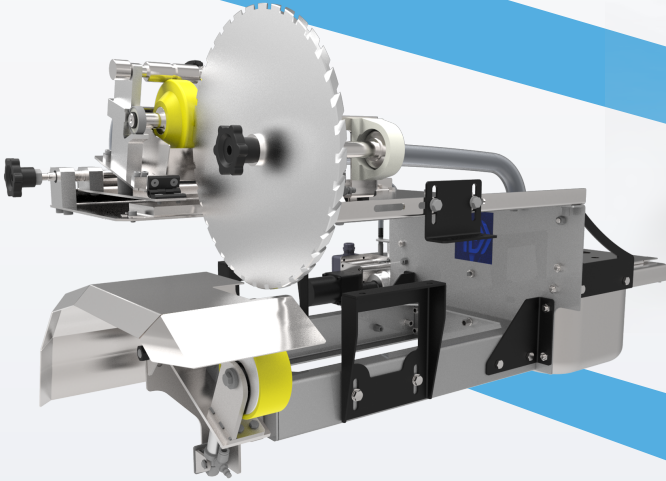
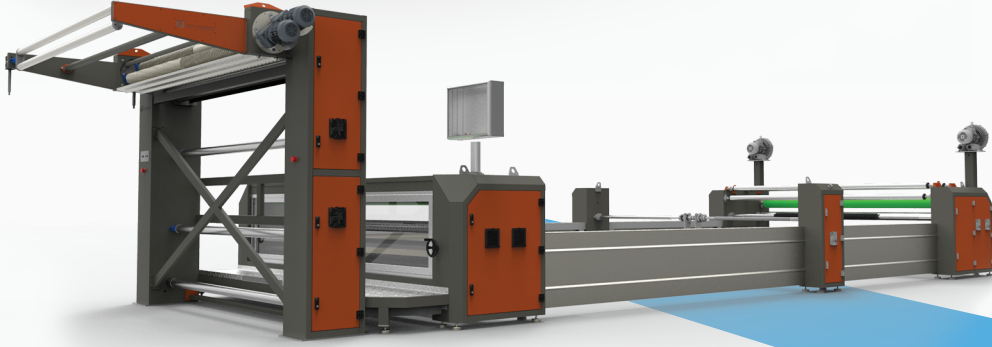
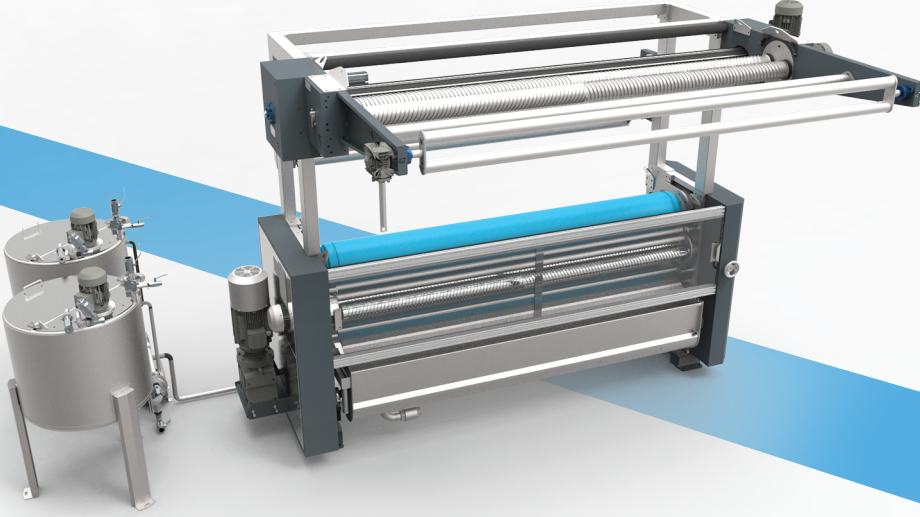






**KGT MAKİNE**

SANAYİ VE TİCARET LTD.ŞTİ.



Beklentilerinize **Kalıcı Çözümler**  
Üretiyoruz...





ESTD

2015

# KGT MAKİNE

S A N A Y İ V E T İ C A R E T L T D . Ş T İ .

## KGT MAKİNE

OSB Sefaköy San. Sit 17.Blok  
No: 6 Başakşehir  
İstanbul / TÜRKİYE



+90 212 549 51 07



info@kgtmakine.com

[www.kgtmakine.com](http://www.kgtmakine.com)

